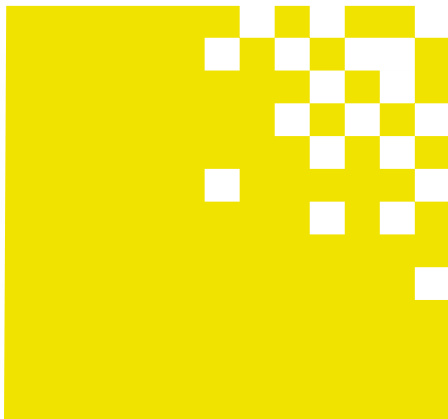
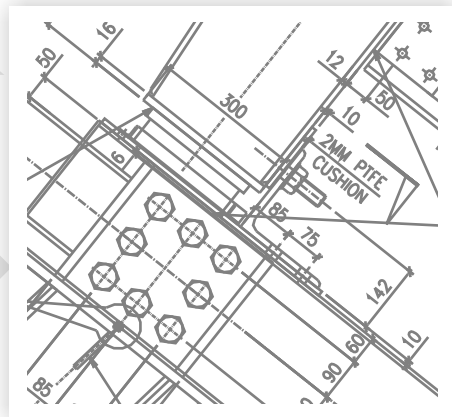


CAD SOLUTIONS



SERVICES

- ↖ CAD & Drafting Services.
- ↖ Updating Red Lined Drawings
- ↖ Old Blueprints to CAD
- ↖ GIS Services
- ↖ BIM Services



PINNACLE INFOTECH INC.

9950 Westpark Dr., Suite 205, Houston, TX 77063

Toll Free : 888 876 8783 Phone : 713 780 2135 Fax : 713 780 8784

Web: www.pinnaclecad.com



INDEX

INTRODUCTION	3
THE PINNACLE ADVANTAGE	4
SERVICES OFFERED	5
OUR RESOURCES	7
TESTIMONIAL	8

COMMITMENT

- Provide world class deliverable, consistently ■
- Innovate new process for enhanced quality ■
- Ensure security & confidentiality ■
- Provide cost effective service in least turnaround time. ■
- Adopt and adapt to new technology ■



Introduction



Founded in 1992, Pinnacle has been serving the AEC Industry worldwide with Computer Aided Design & Drafting services for more than a decade.

□ GLOBAL DELIVERY

Pinnacle has pioneered the Global delivery model with the Houston, Texas office fully supported by world class production facilities in India. Our proven methods and communication process enables our team to seamlessly work with your team making the geographical distance meaningless.

□ CONSISTENCY

For more than a decade, Pinnacle has been catering to the AEC industry world wide. Our ideal mix of infrastructure, international market experience, technology, timely delivery and commitment to excellence has put us as the leader of CAD solution services worldwide." We get repeat business from our existing customers, because we are consistent, accurate and deliver work on-time.

The Pinnacle Advantage

□ ONE STOP SERVICE PROVIDER

We help our clients to become one stop service providers, catering services like Vectorization and CAD Conversion, Indexing and Renaming Scans, Document Conversion and Data Capture, Format Conversion, Data Entry, Rendering, Modeling and BIM services. Our complete portfolio of services facilitates our clients to win loyalty of their clients and win projects in more core business.

□ EXTRA REVENUE

Architects, Construction Companies, Engineering Companies, Schools and Contractors are increasingly converting their old Paper Drawings, Maps and Blue Prints into accurate AutoCAD digital file. These digital files can be easily edited, stored and manipulated with the aid of computer. Most of these are your regular clients. Selling CAD services to these segments are profitable and would generate additional revenues / profits for your organization.

□ FOCUS ON GROWTH

Our team of experts can take-up the burden of your time consuming tasks like Indexing, Renaming Scans, Converting DWG to PLT/ PDF and similar other task; saving your much precious time. This might help you to focus more in other important areas like customer support and business development.

□ TECHNICAL ADVANTAGE

Get Innovative and cost-effective solutions in lesser time and pass on the productivity gains to your clients. We use cutting edge technology and specialize to work on diverse CAD software platforms. We are also technically well equipped to adapt to our client's software environment and system.

□ FASTER SERVICES

Our sophisticated technology and global presence ensures fast turnarounds, consistently. As reported by clients this has reduced their project time by a whopping 30 - 50%!

We also offer 24 hr Rush Delivery Services!

□ OVERNIGHT SERVICE

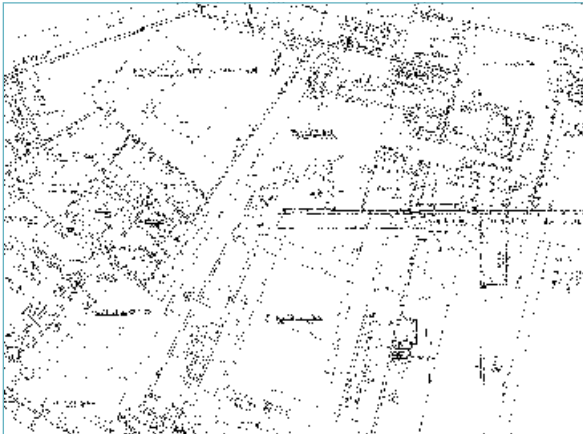
Our global office timings are so aligned that you can assign us a project in the evening and you receive delivery the very next morning!

- Dedicated password protected FTP site
- Desktop sharing conferences
- Video conferences
- VOIP enabled phones
- Emails

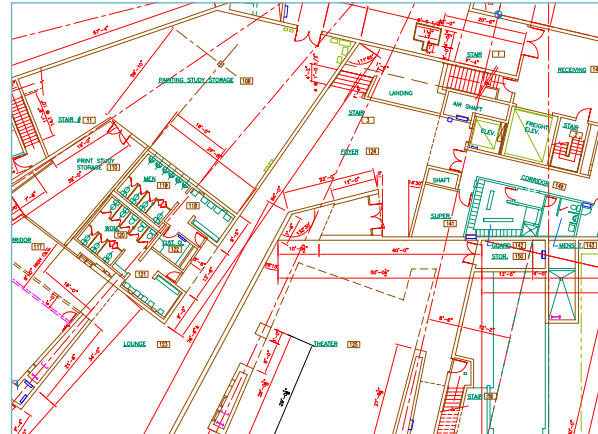
Services Offered

VECTORIZATION & CAD CONVERSION

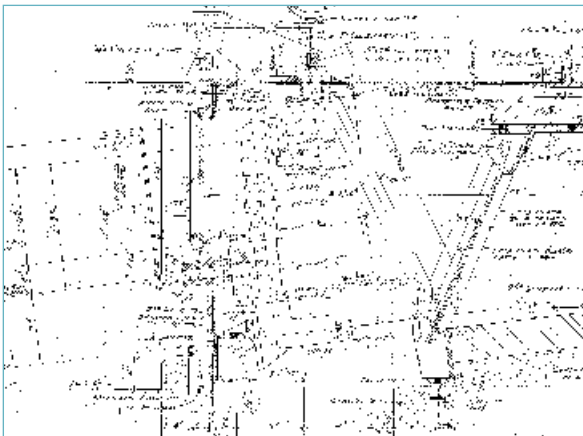
We specialize in conversion of legacy paper drawings into accurate CAD drawings as per client's CAD Standards or as per the prevalent International standards. We are well equipped to efficiently handle almost all CAD platforms like AutoCAD Rel 14, 2000i, 2004, 2009, MicroStation, ArcGIS, Pro-E, etc.



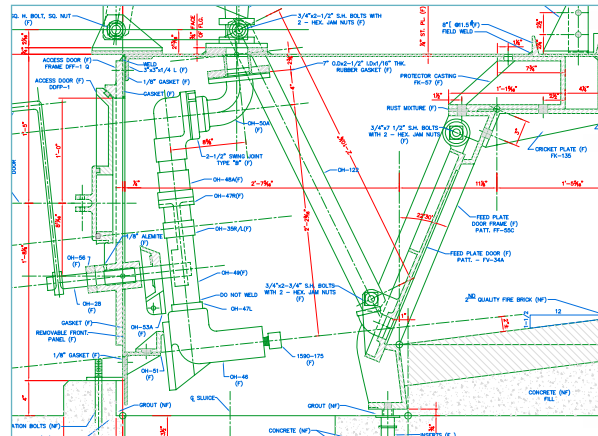
Input - Raster Image



Output - Vector DWG file



Input - Raster Image



Output - Vector DWG file

We specialize in conversion of all types of paper drawings, like –

- Architectural
- Engineering
- Mechanical
- Site Plans
- Contour Maps and
- Almost all other documents

We employ heads up manual redraw process. We do not use any Auto-Vectorization software for conversion process. The Converted files are Editable, Dimensionally Accurate with editable Text & Multi-Layered.

Preferred input formats

- Tiff
- PDF
- CAL

Output Formats

- AutoCAD [DWG, DXF]
- Microstation [DGN]
- and others.



INDEXING & RENAMING SCANS

We specialize in indexing / renaming of all types of scanned documents / drawings for efficient storage and retrieval.

- We have also developed tailor-made processes and software for accurate indexing.
- We offer blind double key verification, which has nearly 100% accuracy.

DOCUMENT CONVERSION & DATA CAPTURE

We convert paper documents / scanned documents to any digital format like –
DOC, XLS, DBF, XML etc.

- We convert them to PDF normal and PDF formatted variants with searchable text and graphics.
- We employ specially trained professionals to capture data from images, forms, full-text sheets, cards, books, sales orders, address books, surveys, etc.
- We involve double entry, OCR, look-up tables, blind double entry, verification and in-house software routines helps us to attain 100% accuracy.

We handle all data formats like -
pdf, doc, xls, mdb, htm, xml, txt, and ASCII.

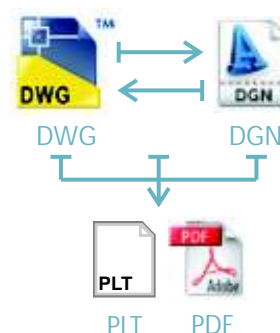
FILE FORMAT CONVERSION

DWG TO DGN CONVERSION

We convert DWG files to DGN files and vice-versa.

DWG, DGN TO PLT & PDF CONVERSION

We convert DWG & DGN files to PLT and / or PDF files.



GIS & MAPPING SERVICE

We Convert Geographic and Land data into digital format, so that it is easily accessible electronically. We also convert maps, drawings and documents to vector and hybrid formats with intelligent links to databases. We have successfully implemented projects on Tax Parcel Mapping for counties and Municipal towns, Utility Maps and Geo-Database for countries and utility companies, Pipeline maps with cadastral information for oil companies.



Our Resources



STATE-OF-THE-ART TECHNOLOGY CAMPUS

Our 280,000 sq. ft. fully owned Technology Campus is situated in one of the largest industrial cities of India. The campus houses modern work stations, cafeteria, gymnasium, swimming pool, sports and entertainment facilities. The in-house accommodation facility of the Technology Campus is surrounded by plush green landscape. These facilities give us an edge in attracting the best talents in the business.

SKILLED WORKFORCE

We have expertise on all International CAD Conversion standards and process. We have also developed our own CAD Conversion standards. We have more than 350 employees with diverse expertise and backgrounds like graduate engineers, diploma engineers, ITIs, general graduates and other non technical personnel.

QUALITY

We are an ISO 9001:2000 certified company. Our Quality Assurance Process is being headed by personnel having more than a decade of experience in Quality Management. This helps us to deliver International quality output, consistently.

SECURITY - IT AND GENERAL

We have ISO certified IT security policies, predefined backup policy, disaster recovery plan as well as real-time backup. Round the clock trespassing is being intercepted by a network of CCTV camera system, team of security personnel and latest access control system.

We do not and will not divulge project details or confidentiality data with anyone under any given circumstances.

Additional 1 year guarantee on all Vectorization AutoCAD conversion projects absolutely free !!!

Testimonial



"We have been using Pinnacle Infotech since November, 2004 and have been very satisfied with the quality and speed of their services. On the first project we used Pinnacle Infotech, we reduced our outsourced CAD expenses from \$30,000 to \$10,000 and shortened our timeline by two weeks. Project Management was impressed. I gladly recommend Pinnacle Infotech to those who benefit from outsourcing CAD drafting."

■ David Brandt
CAD Manager, McKinstry Company (Seattle)



"3D BIM services has enabled us to review contractibility of drawings before construction. Pinnacle has always provided accurate drawings and fast turnaround saving us costs and meeting tight schedule. Keep up good work."

■ Michael Cowling
Northern Engineering Pvt Ltd. (Australia)



"I enjoy working with Pinnacle Infotech because their staff is always very courteous and helpful and their turnaround times and quality are second to none. I have gained numerous repeat customers based solely on the superior product provided to me by your company. Keep up the good work!"

■ Steve Tye
Nevada Blue LTD - Reno Branch Manager
(Reno, NV)



"I really appreciate the excellent service and turnaround time. Keep up your great service."

■ Shawn Stevenson
Blueprints Plus Boise, Idaho 83714



"Pinnacle's work is always excellent, on time and priced to be extremely competitive. I credit much of my success to the outstanding work they have performed for me and my clients. Thank you to the people at Pinnacle Infotech Inc."

■ Bob McGuinness
Bob Mc Guinness Enterprises (New York)



"We really appreciate the excellent service and continued level of effort your employees have provided. Keep up the good work."

■ Samuel R Cathey
Technical Manager (Tennessee Valley Authority)



"I personally have been doing business with Pinnacle for vector works for a year now. Never has one of my projects been lost, late, or anything other than immaculate. Their work consistently pleases my clients. Their attention to detail and willingness to please keeps my clients not only happy, but bring them back for more vector work."

■ Brian Conrad
Brownie's AutoCad



"Pinnacle's level of service has been high and they have been receptive to meeting our needs and special requests or rush jobs."

■ Ford Graphics
South Pasadena, CA



"We really like your services. I feel that the services you offer are of excellent quality to us and make our customers extremely happy."

■ Johnathan K. Barrow
Director of Professional Services (Western Blue)



"Once again you guys made me shine. You're the best. My clients are loving this service. You guys are doing great work!"

■ Jay Foran
President (Alpha Reprographics)



USA Office and Production Center

Pinnacle Infotech Inc.

9950, Westpark Dr., Suite 205,
Houston, TX 77063
Toll Free : 888 876 8783
Phone : 713 780 2135
Fax : 713 780 8784
Email : btodi@pinnaclecad.com

Biswanath Todi
Operations Manager
Cell : 832 283 6628

International Production Center

Pinnacle Infotech Solutions

S.S.B. Sarani, Bidhannagar, Durgapur
West Bengal, India - 713212
Phone : +91 343 2533250
Fax : +91 343 2533252
Email : bpatwari@pinnaclecad.com

Bimal Patwari
President
Cell : 713 589 9125

UAE Office

Pinnacle Middle East

P.O. 55384, ABUDHABI, UAE
Phone : 009712 6781070
Fax : 009712 6781080
Email : smahajan@pinnaclecad.com

Sandeep Mahajan
Operations Manager



PINNACLE INFOTECH INC.

9950 Westpark Dr., Suite 205, Houston, TX 77063
Toll Free : 888 876 8783 Phone : 713 780 2135 Fax : 713 780 8784
Web: www.pinnaclecad.com