

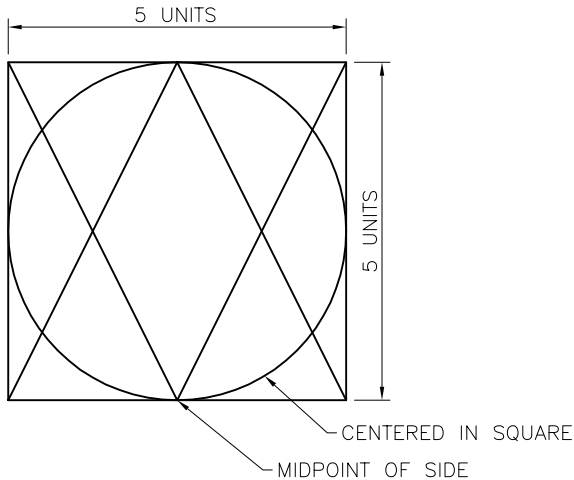
H&A CAD Proficiency Evaluation

Name: _____
Date: _____

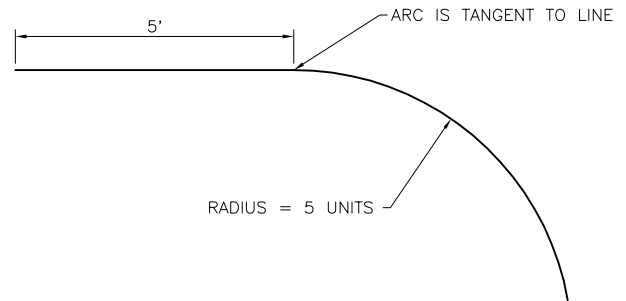
Open a session of Map5 or LDT3 and perform the following activities.

Basic Drafting

1. Draw the following figure. Do not dimension.



2. Draw the following figure. Do not dimension.



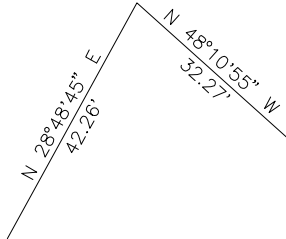
3. Draw the following text and mtext. Set up correctly named styles.

THIS IS DTEXT ← STYLE = ROMANSX

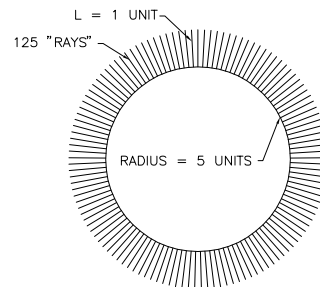
THIS IS MTEXT THAT WRAPS LINES. ← STYLE = ROMANSX

Intermediate Drafting

4. Draw the following figure. Do not dimension.



5. Draw the following. Do not dimension.



Command Habits

1. Do you use Toolbars more than key-in (typed) commands?

2. How do you normally tell AutoCad to snap to a point?

3. What key can be typed instead of the <Enter> key?

Layers

1. Why organize things into layers?

2. Why use "bylayer" for object properties?

H&A CAD Proficiency Evaluation

Xrefs

1. What command does AutoCad provide to attach xrefs?
2. How would one tell if xrefs were attached to a drawing?
3. What is the difference between an "attach" xref and an "overlay" xref.
4. Why use xrefs?
5. What is the command to clip the view of an xref?

Paper / Modelspace

1. What is the command to draw a viewport in paperspace?
2. What is the command to zoom a viewport's view to 20 scale relative to paper space?
3. How do you twist a view inside a viewport?
4. Why use viewports?