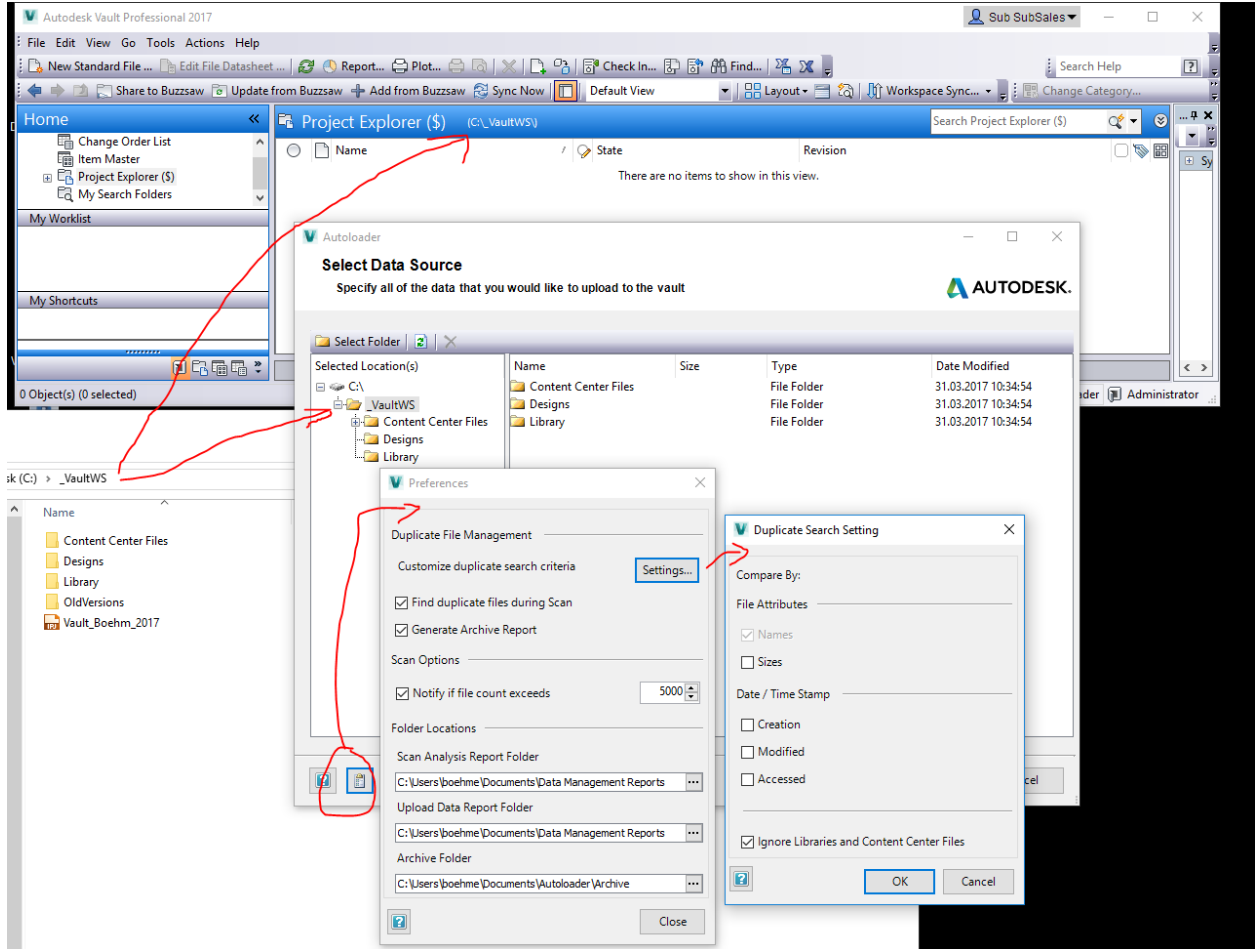


Autodesk Vault Autoloader 2017

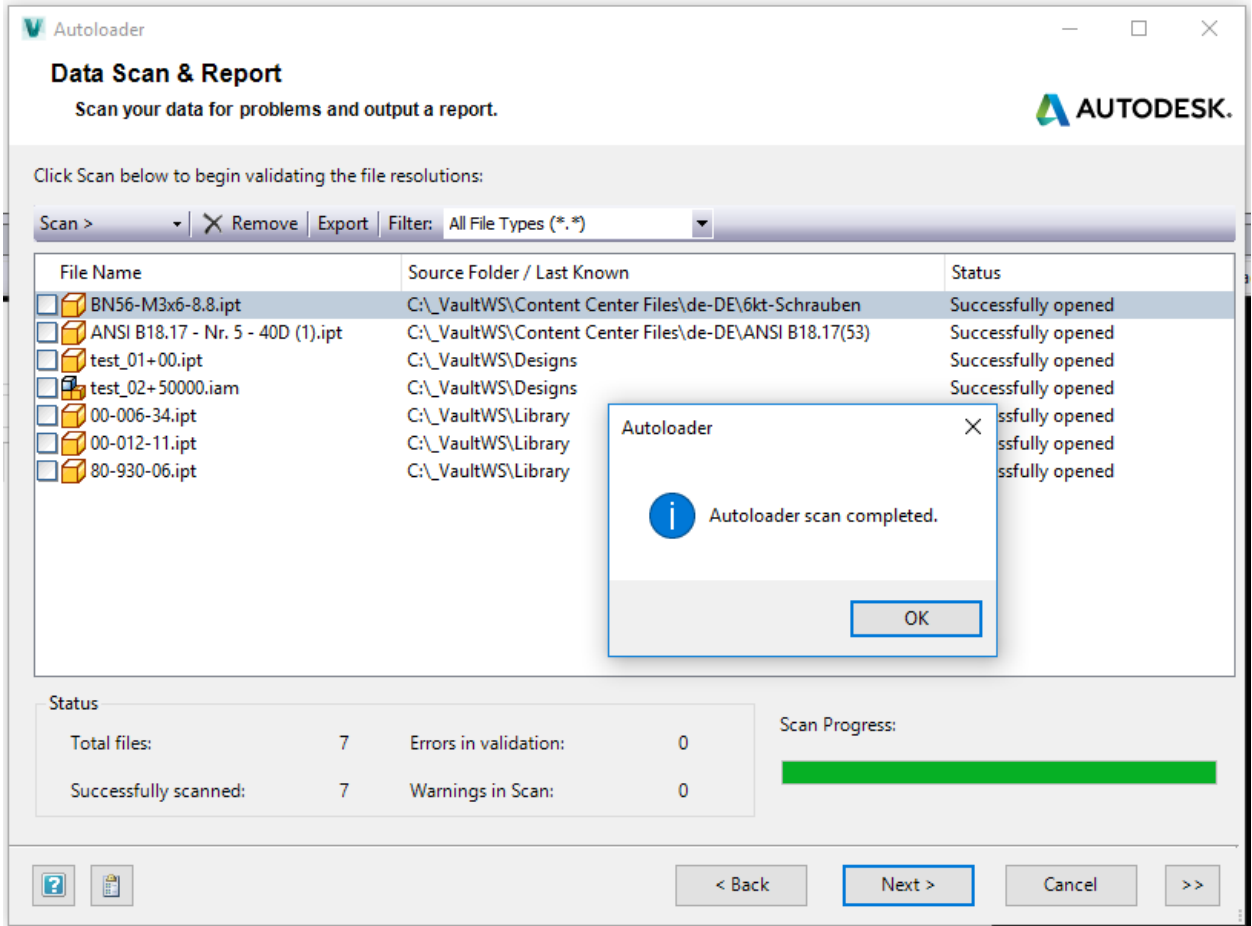
Documentation about issue with Autodesk Vault Autoloader 2017, when import files.

1. New Vault Tresor 2017
2. Launch Autodesk Vault Autoloader and select the folder, which is to import into Vault 2017



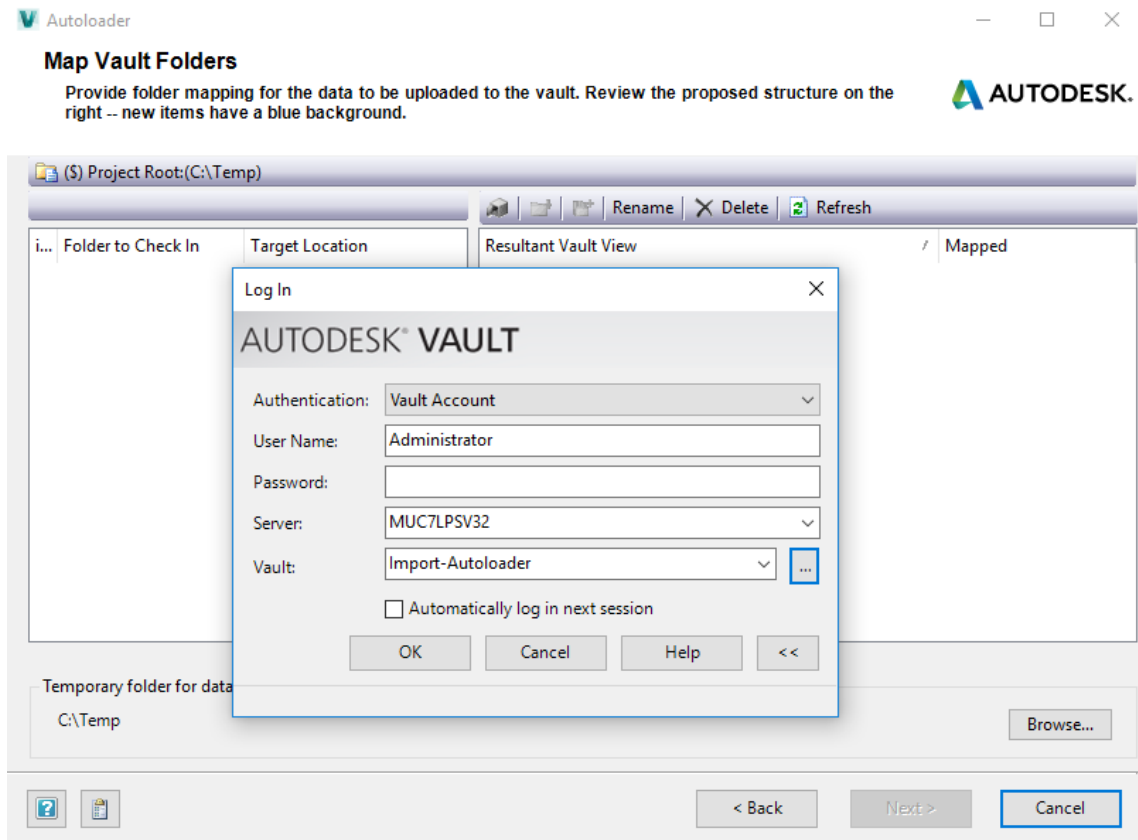
Autodesk Vault Autoloader 2017

3. Scan all File Types (*.*) → Result: Autoloader scan completed. Status: Successfully opened

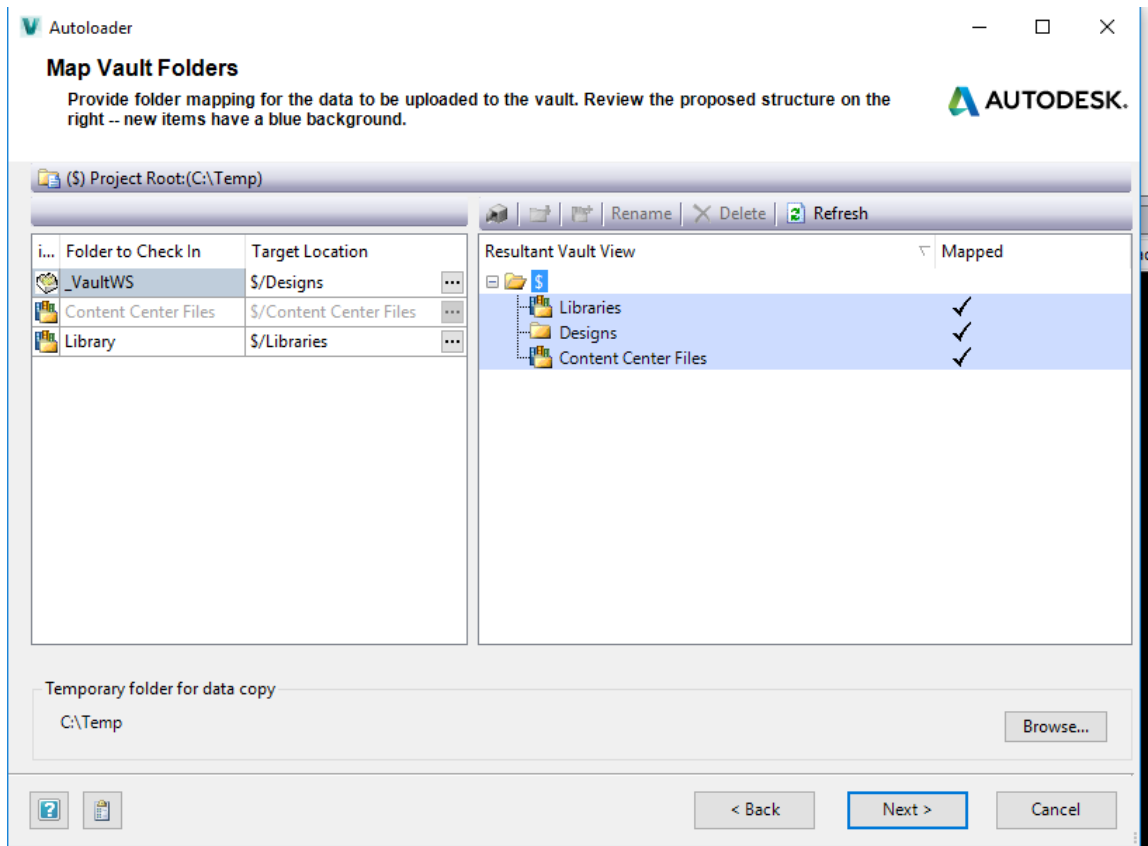


Autodesk Vault Autoloader 2017

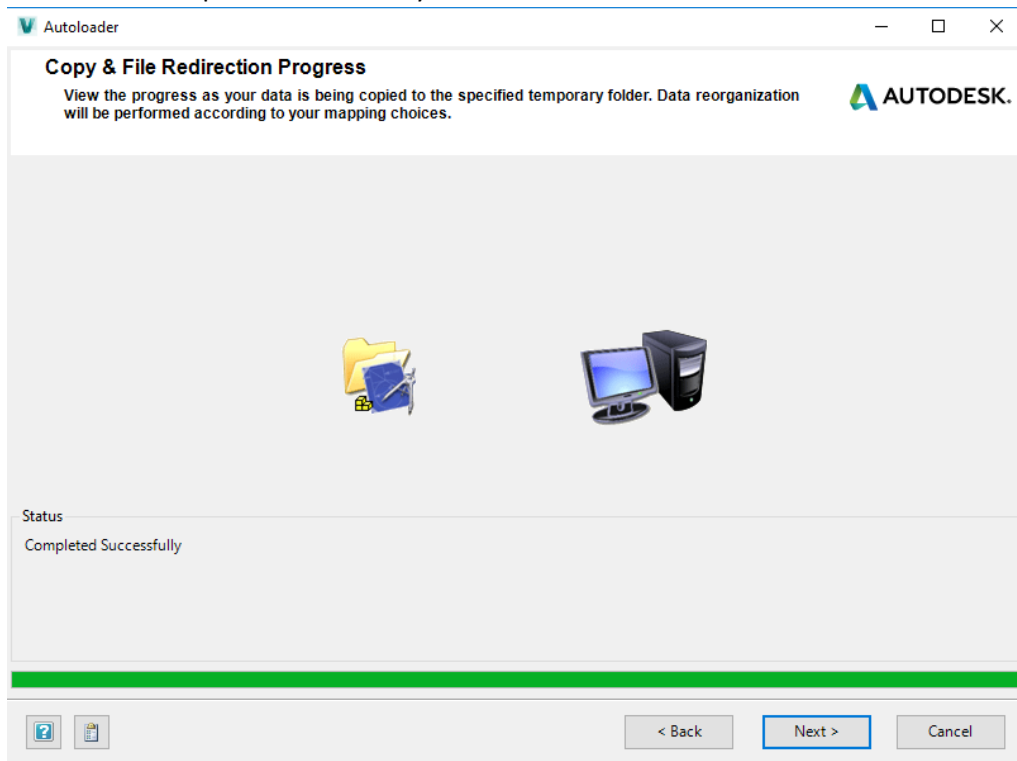
4. Log in into Autodesk Vault and Map Vault Folders.



Autodesk Vault Autoloader 2017

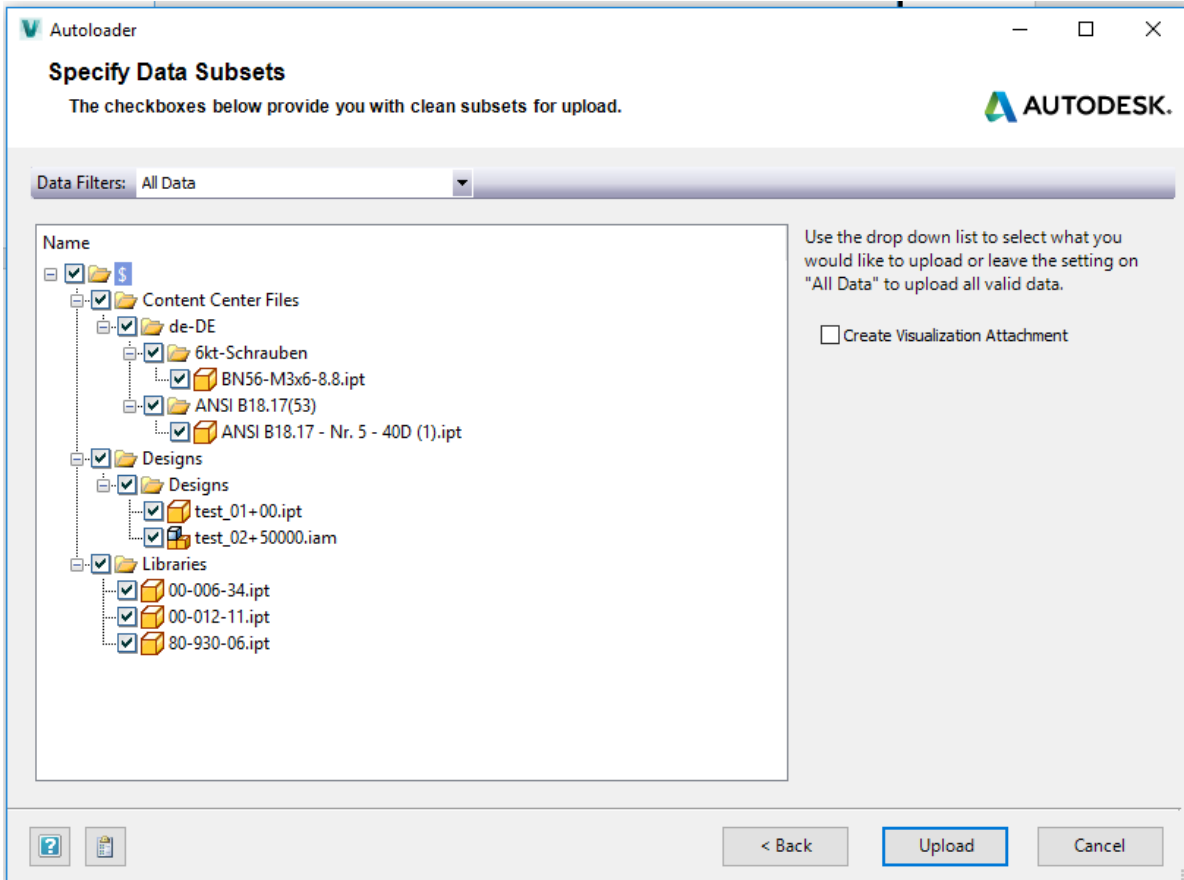


5. Autoloader Completed Successfully



Autodesk Vault Autoloader 2017

6. Specify Data Subsets for uploading into Autodesk Vault 217



Autodesk Vault Autoloader 2017

7. Autoloader uploaded the files and wrote all this in the Report File.

Autoloader ×

Autoload Progress & Report

View the progress of the upload and output a report. AUTODESK.

View Report

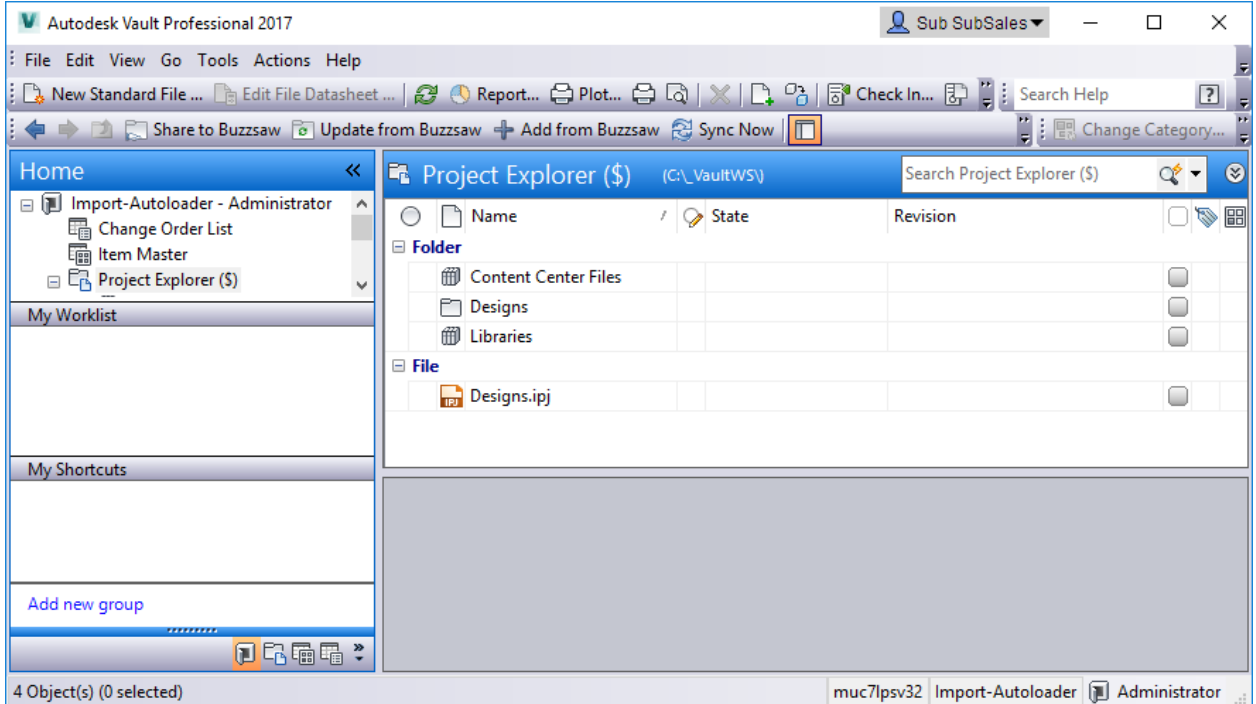
File Name	Upload Location / Last Known	Statu...	Status / Messages
BN56-M3x6-8.8.ipt	\$/Content Center Files/de-DE/6kt-Schrauben/BN...	✓	Successfully Uploaded
ANSI B18.17 - Nr. 5 - 40D (1...	\$/Content Center Files/de-DE/ANSI B18.17(53)/A...	✓	Successfully Uploaded
test_01+00.ipt	\$/Designs/Designs/test_01+00.ipt	✓	Successfully Uploaded
00-006-34.ipt	\$/Libraries/00-006-34.ipt	✓	Successfully Uploaded
00-012-11.ipt	\$/Libraries/00-012-11.ipt	✓	Successfully Uploaded
80-930-06.ipt	\$/Libraries/80-930-06.ipt	✓	Successfully Uploaded
test_02+50000.iam	\$/Designs/Designs/test_02+50000.iam	✓	Successfully Uploaded

Status
Report file, Upload Report_20170331_105824.xml, is saved at C:\Users\boehme\Documents\Data Management Reports.

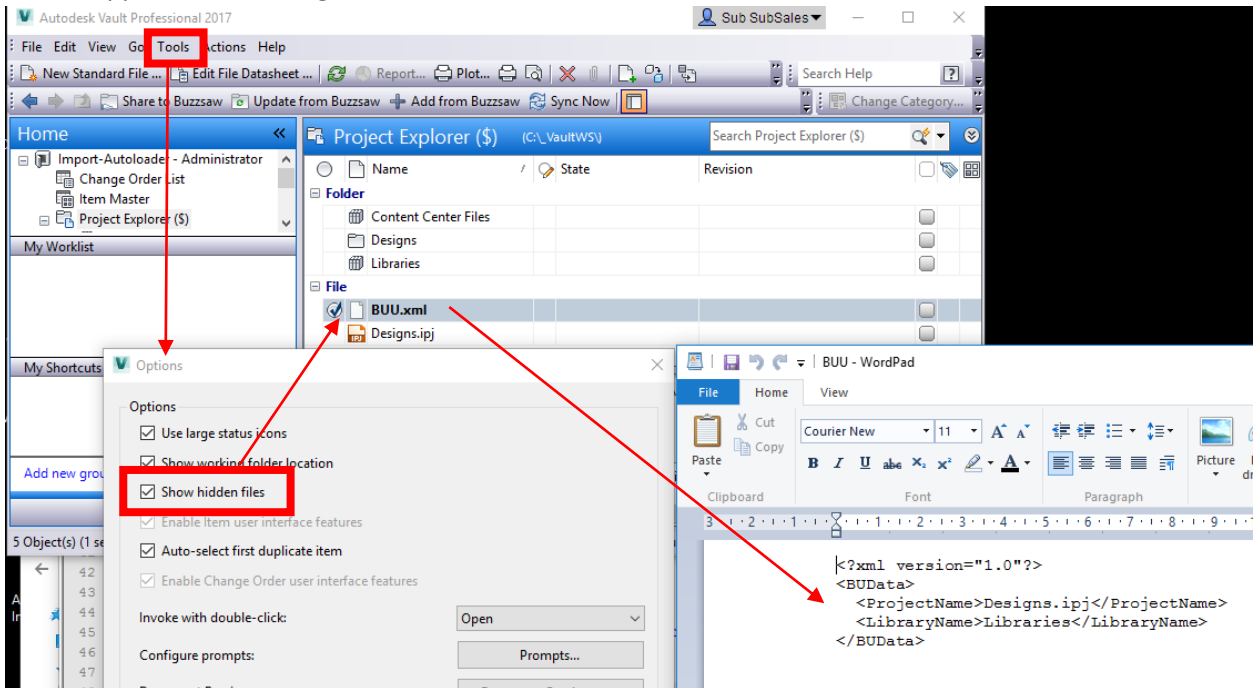
Done

Autodesk Vault Autoloader 2017

8. Autodesk Vault Explorer 2017 with imported files with Autoloader

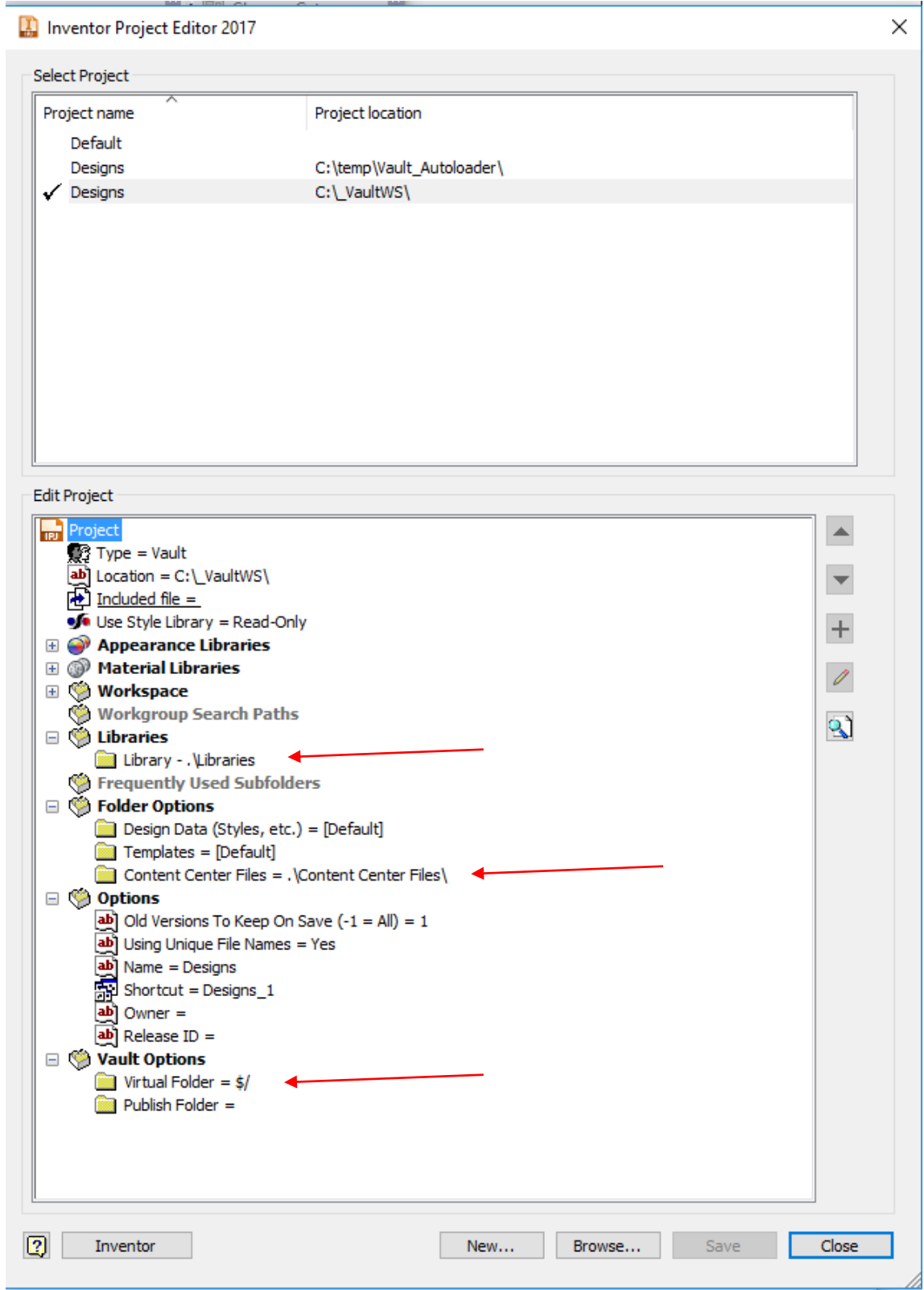


9. What happens in the background – Create a new Show hidden files = BUU.XML



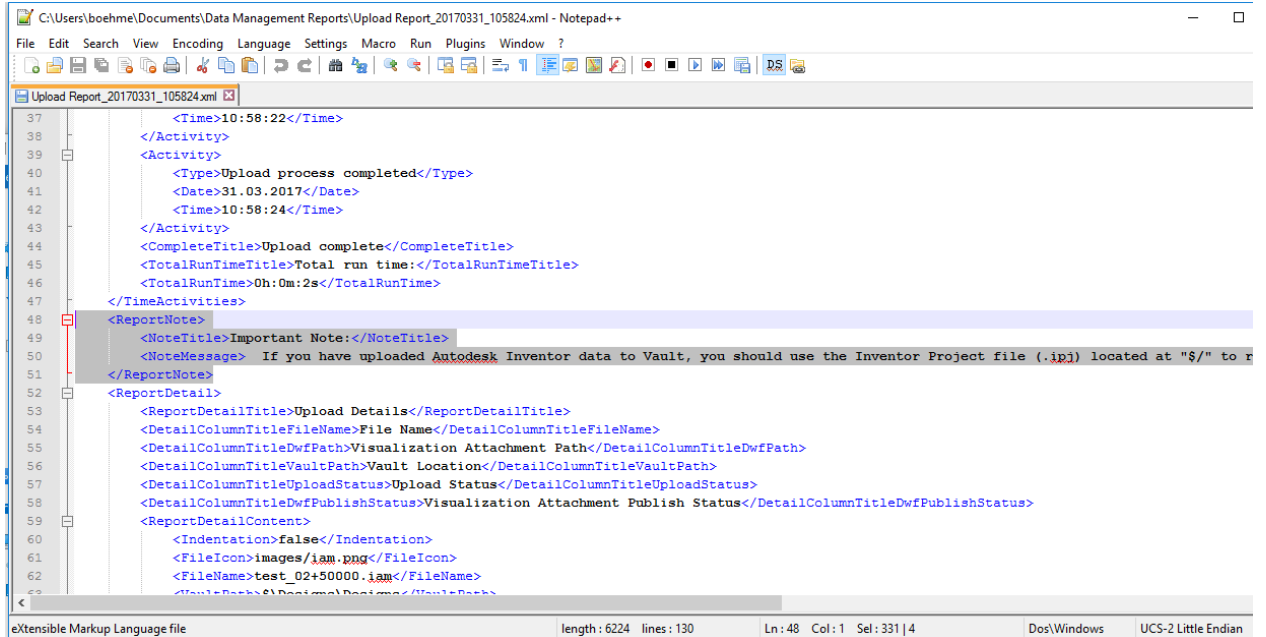
Autodesk Vault Autoloader 2017

10. The new Inventor Project file Designs.ipj has following informations inside:



Autodesk Vault Autoloader 2017

11. Interesting information in the Report:



```
37      <Time>10:58:22</Time>
38    </Activity>
39    <Activity>
40      <Type>Upload process completed</Type>
41      <Date>31.03.2017</Date>
42      <Time>10:58:24</Time>
43    </Activity>
44    <CompleteTitle>Upload complete</CompleteTitle>
45    <TotalRunTimeTitle>Total run time:</TotalRunTimeTitle>
46    <TotalRunTime>0h:0m:2s</TotalRunTime>
47  </TimeActivities>
48  <ReportNote>
49    <NoteTitle>Important Note:</NoteTitle>
50    <NoteMessage> If you have uploaded Autodesk Inventor data to Vault, you should use the Inventor Project file (.ipj) located at "$/" to r
51  </ReportNote>
52  <ReportDetail>
53    <ReportDetailTitle>Upload Details</ReportDetailTitle>
54    <DetailColumnTitleFileName>File Name</DetailColumnTitleFileName>
55    <DetailColumnTitleDwfPath>Visualization Attachment Path</DetailColumnTitleDwfPath>
56    <DetailColumnTitleVaultPath>Vault Location</DetailColumnTitleVaultPath>
57    <DetailColumnTitleUploadStatus>Upload Status</DetailColumnTitleUploadStatus>
58    <DetailColumnTitleDwfPublishStatus>Visualization Attachment Publish Status</DetailColumnTitleDwfPublishStatus>
59    <ReportDetailContent>
60      <Indentation>>false</Indentation>
61      <FileIcon>images/iam.png</FileIcon>
62      <FileName>test_02+50000.iam</FileName>
63      <VaultPath>($Design)</VaultPath>
```

```
<ReportNote>
  <NoteTitle>Important Note:</NoteTitle>
  <NoteMessage> If you have uploaded Autodesk Inventor data to Vault, you should use the Inventor Project file (.ipj) located at "$/" to resolve Inventor files. If this Project file is not used, resolution problems may occur.</NoteMessage>
</ReportNote>
```