

Issue:

I inadvertently assigned a user defined property “Drawing Type” to (Mechanical) on an ipt file.

Now I am unable to delete this property even though it should only be enforced with idw or dwg file categories.

This user defined property is set to only be enforced with idw or dwg files yet, after adding a value to an ipt model category I am unable to clear the property without leaving behind a non-compliant warning flag.

The following figures show information relating to this issue.

Fig 1 shows the “Drawing Type” user defined property associated to the ipt file.

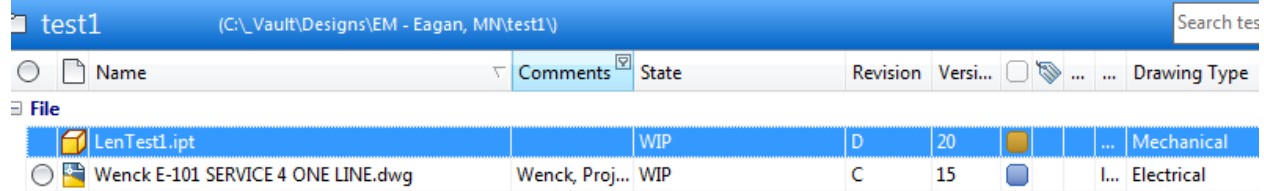


Fig 2 shows the Property Edit dialog with the Drawing Type pull-down choices.

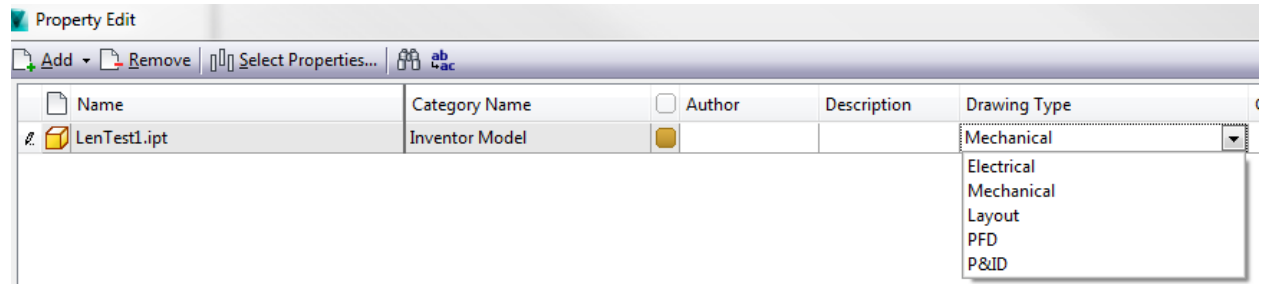


Fig 3 show what happens when I delete a value from this field. I get a symbol stating that a value is required for the property. This only happens if I add the value to the ipt. If I do not select a value then the issue does not occur.

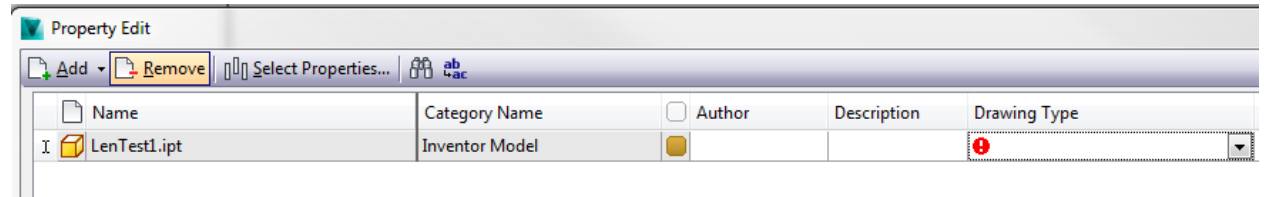


Fig 4 shows the Vault Property Definition for the “Drawing Type” property. The initial value is blank and only the Inventor and Autocad drawing file categories should be enforced.

