

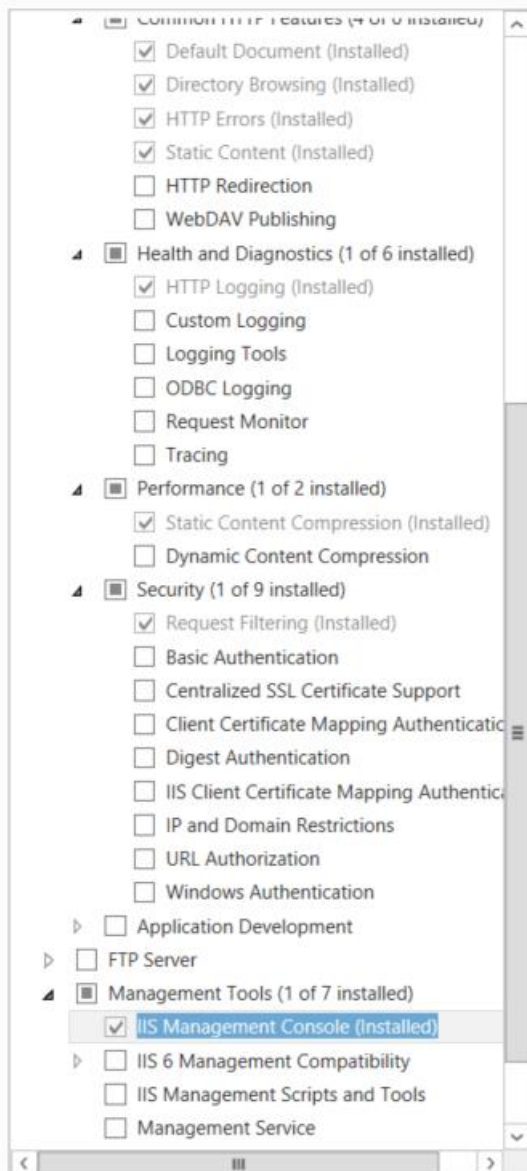
Steps to installing Vault on Windows Server 2012

First section is based on “Autodesk Vault Advanced Configuration Guide 2014” (AVACG2014), I have a feeling that the document is wrong because it does not indicate any requirement for iis6 compatibility

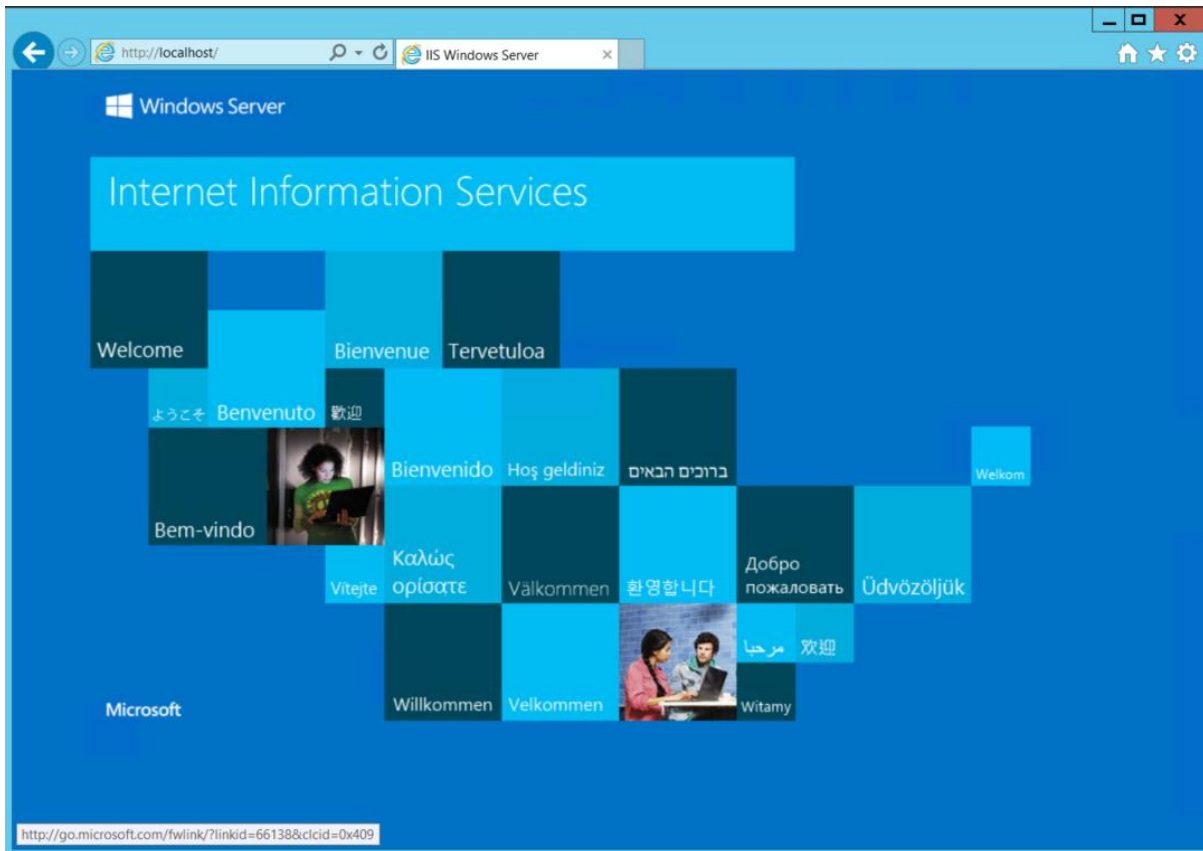
1. Install IIS based on AVACG2014

Select one or more roles to install on the selected server.

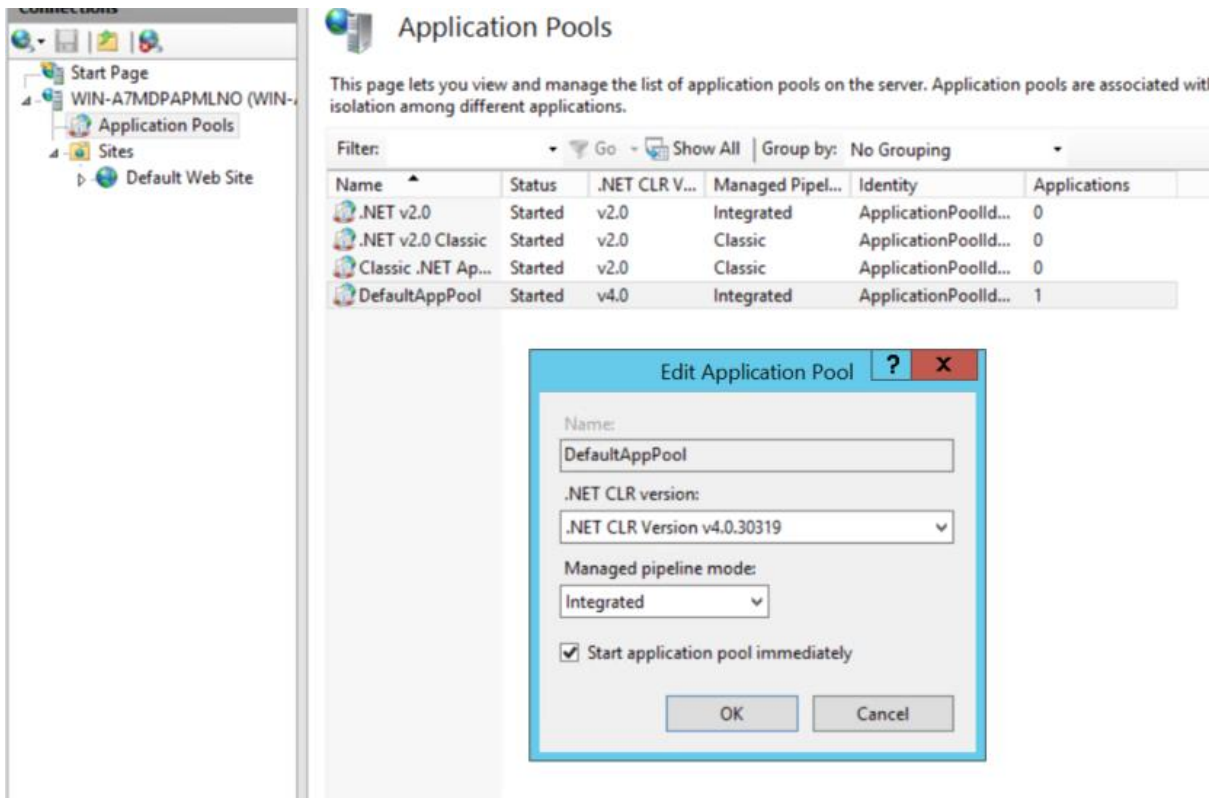
Roles



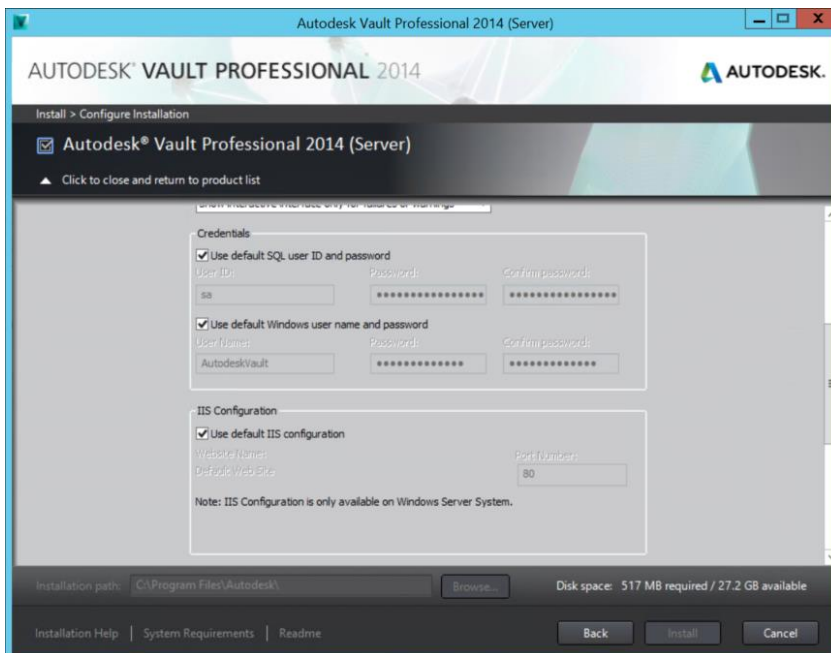
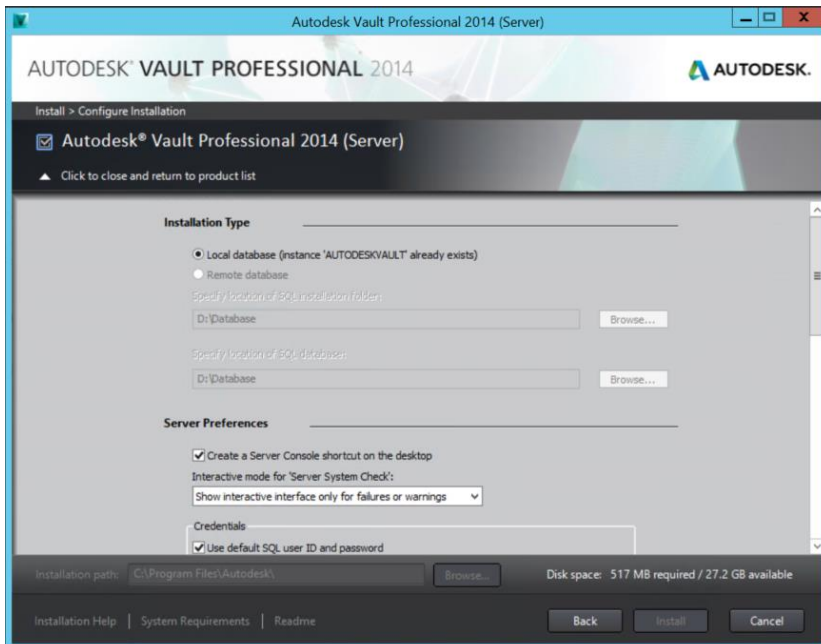
2. Confirm iis working by resolving localhost



3. Confirm version of .net running defaultappool



4. Run installation using default settings (tried both with and without SP1)



5. The following errors came up indicating the need for iis metabase

ADMS System Check Report

Test for System Readiness

The diagnostic tool performs a series of checks to verify that the system is still configured properly for the Autodesk Data Management Server framework. Review the status of the tests below. Once you have corrected any warnings or failures, click Re-test to re-run the diagnostics and to validate the system configuration.

System Tests:

- ✖ Action Required: 8
 - ✖ Validating that IIS Anonymous Authentication on IIS is set up correctly
 - [Vista IIS Metabase Access is required. Please click to get info on turning this feature on.](#)
 - ✖ Checking for additional IIS ISAPI filters
 - [Vista IIS Metabase Access is required. Please click to get info on turning this feature on.](#)
 - ✖ Checking IIS directory paths
 - [Vista IIS Metabase Access is required. Please click to get info on turning this feature on.](#)
 - ✖ Determining IIS website Default Web Site Internet address(es).
 - [Vista IIS Metabase Access is required. Please click to get info on turning this feature on.](#)
 - ✖ "AutodeskDM" virtual directory existence check
 - [Vista IIS Metabase Access is required. Please click to get info on turning this feature on.](#)
 - ✖ Check IIS connection time out.
 - [Vista IIS Metabase Access is required. Please click to get info on turning this feature on.](#)

Status: 8 Failure(s), 0 Warning(s)
Review error(s)/warning(s) (above) and resolve before proceeding

Buttons: Re-test, View Log File, Print

Test for System Readiness

The diagnostic tool performs a series of checks to verify that the system is still configured properly for the Autodesk Data Management Server framework. Review the status of the tests below. Once you have corrected any warnings or failures, click Re-test to re-run the diagnostics and to validate the system configuration.

System Tests:

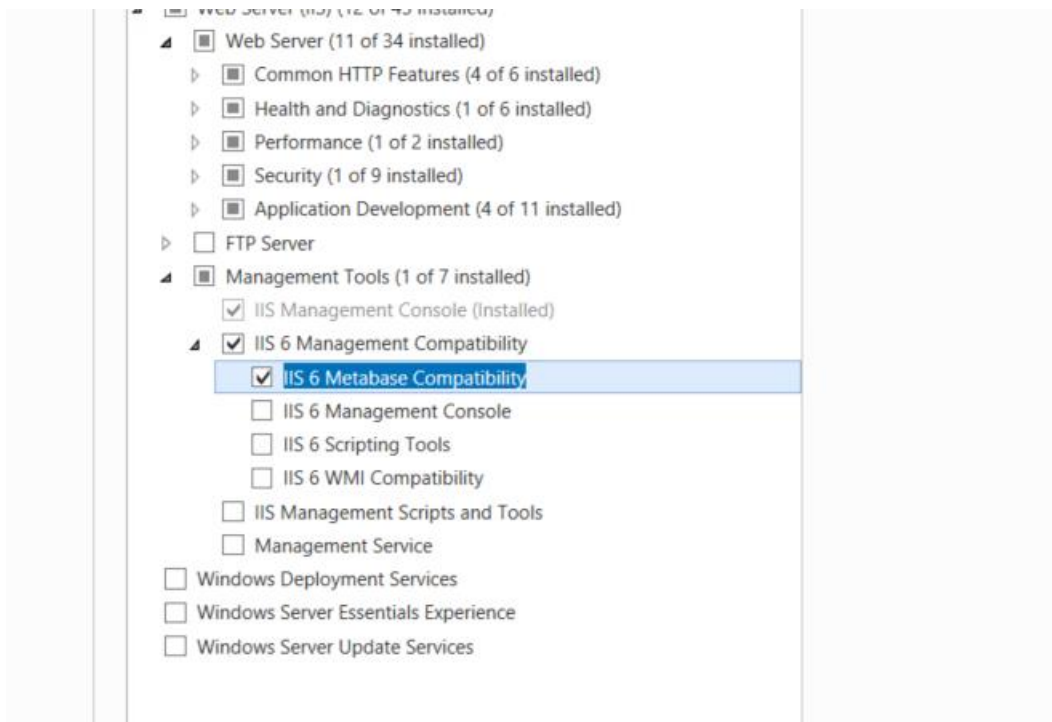
- [Vista IIS Metabase Access is required. Please click to get info on turning this feature on.](#)
- ✖ Checking IIS directory paths
 - [Vista IIS Metabase Access is required. Please click to get info on turning this feature on.](#)
- ✖ Determining IIS website Default Web Site Internet address(es).
 - [Vista IIS Metabase Access is required. Please click to get info on turning this feature on.](#)
- ✖ "AutodeskDM" virtual directory existence check
 - [Vista IIS Metabase Access is required. Please click to get info on turning this feature on.](#)
- ✖ Check IIS connection time out.
 - [Vista IIS Metabase Access is required. Please click to get info on turning this feature on.](#)
- ✖ Checking ASP Status
 - [Vista IIS Metabase Access is required. Please click to get info on turning this feature on.](#)
- ✖ Check permissions of the account used by ASP.NET.
 - [Vista IIS Metabase Access is required. Please click to get info on turning this feature on.](#)
- ⚠ Warnings: 0

Status: 8 Failure(s), 0 Warning(s)
Review error(s)/warning(s) (above) and resolve before proceeding

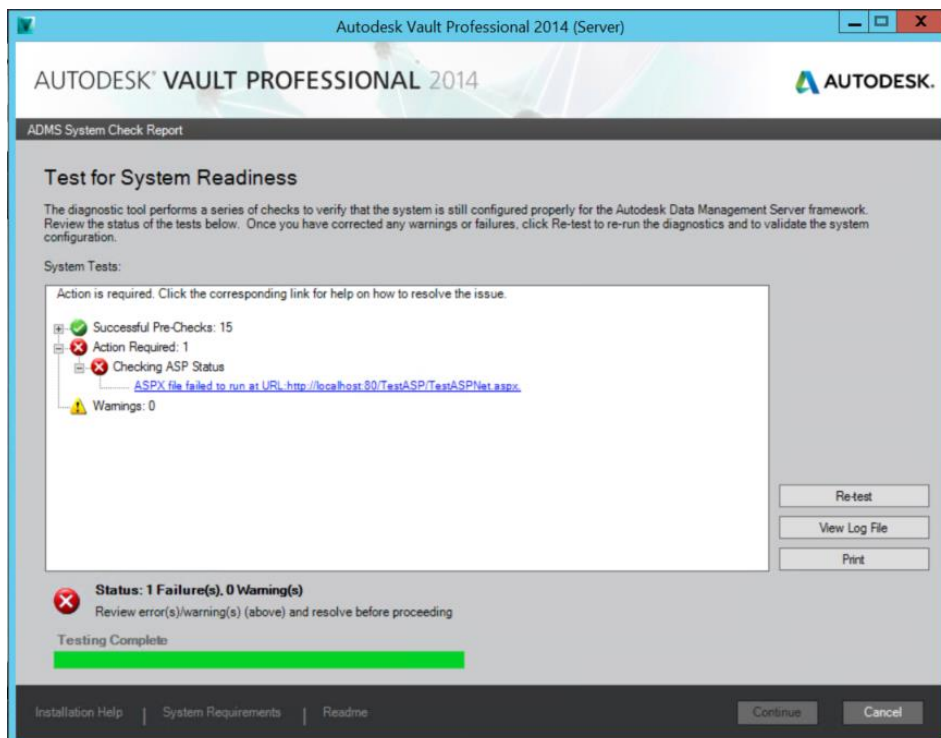
Testing Complete

Buttons: Re-test, View Log File, Print

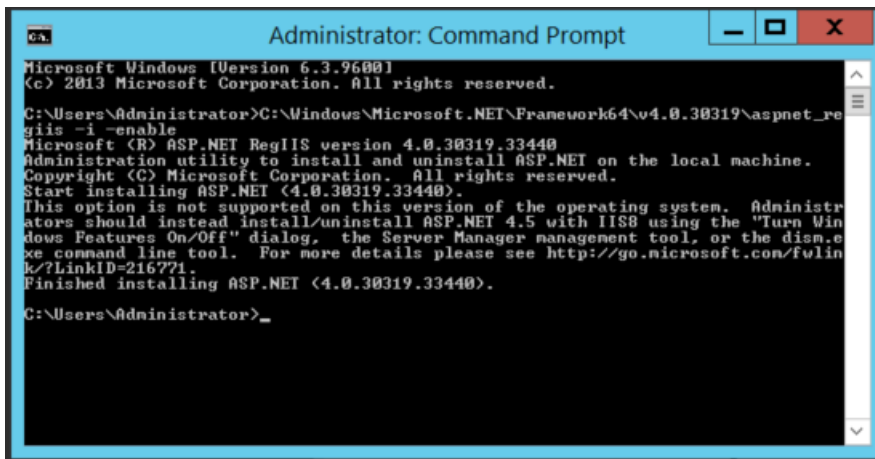
6. Installed Feature



7. Re-Run test



8. Try register via cmd line (without success, cannot be done on windows server 2012 I think)



```
Administrator: Command Prompt
Microsoft Windows [Version 6.3.9600]
(c) 2013 Microsoft Corporation. All rights reserved.

C:\Users\Administrator>C:\Windows\Microsoft.NET\Framework64\v4.0.30319\aspnet_regiis -i -enable
Microsoft (R) ASP.NET RegIIS version 4.0.30319.33440
Administration utility to install and uninstall ASP.NET on the local machine.
Copyright (C) Microsoft Corporation. All rights reserved.
Start installing ASP.NET (4.0.30319.33440).
This option is not supported on this version of the operating system. Administrators should instead install/uninstall ASP.NET 4.5 with IIS8 using the "Turn Windows Features On/Off" dialog, the Server Manager management tool, or the dism.exe command line tool. For more details please see http://go.microsoft.com/fwlink/?LinkID=216771.
Finished installing ASP.NET (4.0.30319.33440).

C:\Users\Administrator>
```

9. Confirm DefaultAppPool still running version 4.0 of .net
10. IIS reset
11. Restart
12. I have even tried installing the following features without any luck, I tried 3.5, 4.5 and both

