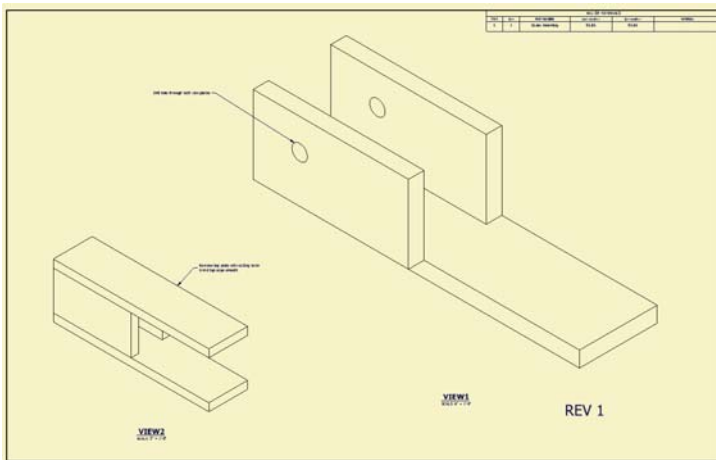
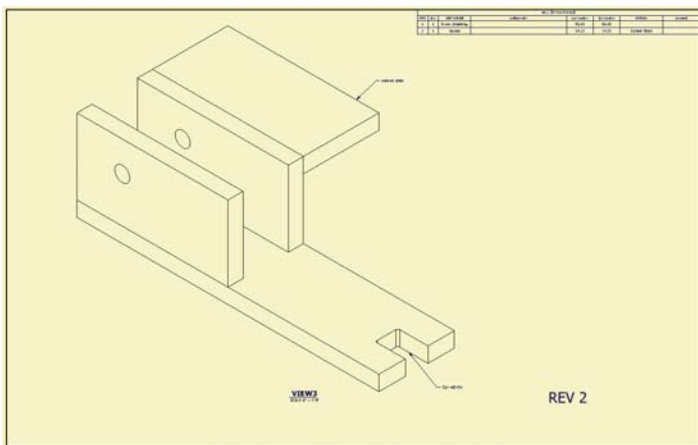


Original Fabrication of Girder Assembly



Revision 1 of Girder Assembly

- Rev 0 Saved as to make Rev 1 Assembly Reference then remove top plate
- Rev 1 Reference placed in new assembly file to add machining details to assembly to create the Rev 1 final



Revision 2 of Girder Assembly

- Rev 1 Final saved as to make Rev 2 final
- Added new plate and then Machining details