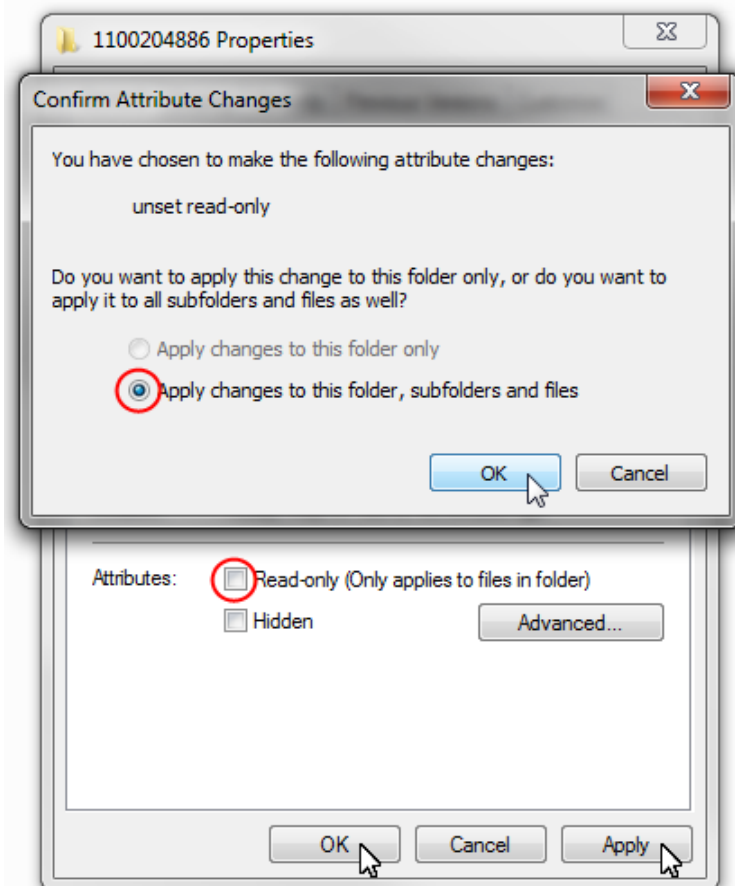


iLogic Design Copy Tutorial

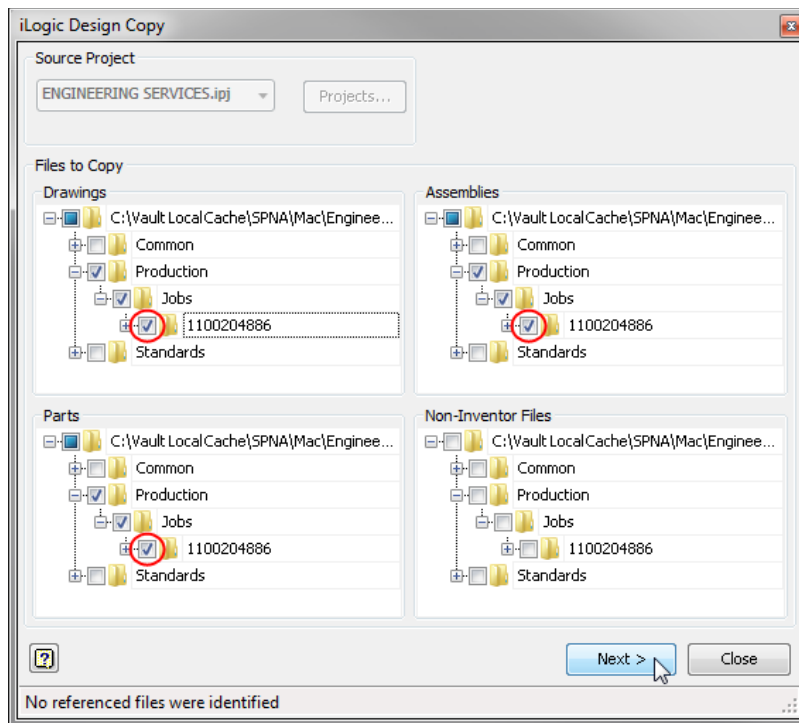
Copying a directory using iLogic Design Copy

1. In Vault create the new folder that you want to copy to. This folder should be located outside of the directory that you are copying.
2. **Right-click** the new folder in Vault and select **Go to Working Folder** to create the folder in the Vault Local Cache.
3. In Vault **right-click** on the top level of the directory you wish to copy and select **Get/Checkout** to download the most recent version of the entire directory to the Vault Local Cache.
4. In **C:\Vault Local Cache** browse to the directory you are copying, **right-click** on the top level of the directory and select **Properties**, uncheck **Read-only**, click **Apply**, **OK**, and **OK**.

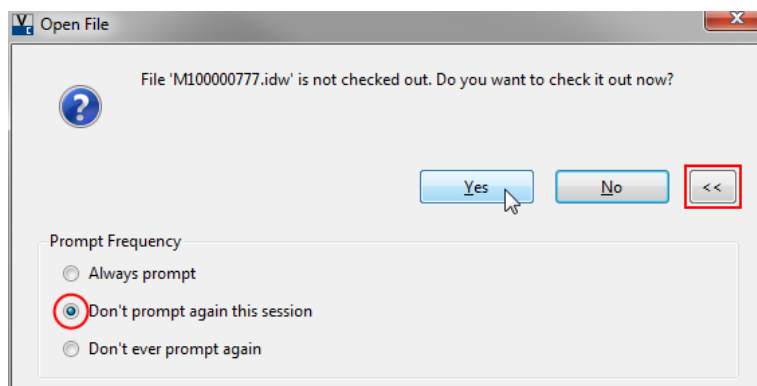


5. Open Inventor, switch to the applicable project and click on **iLogic Design Copy** on the **Tools** tab.
 - **NOTE:** This tool is only available when no files are open in Inventor.

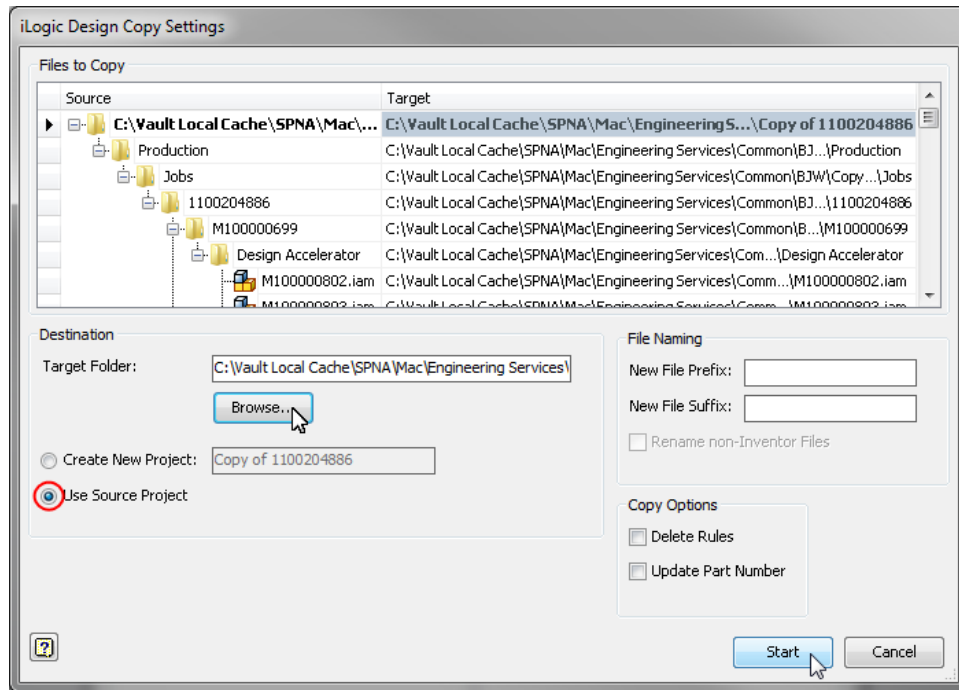
6. In the iLogic Design Copy dialog select the directory you wish to copy in each file type category you wish to copy.
- If your primary concern in a given copy is the drawings you only need to check the directory under the Drawings category. The dialog will find and automatically check all other file types that are linked to the drawings. If you simply want to copy a directory verbatim then you may select the directory in all four categories.
 - If the directory contains a large number of drawings it may take Inventor some time to verify each drawing when the directory is selected in the Drawings category. Wait for the process to complete before trying to continue.



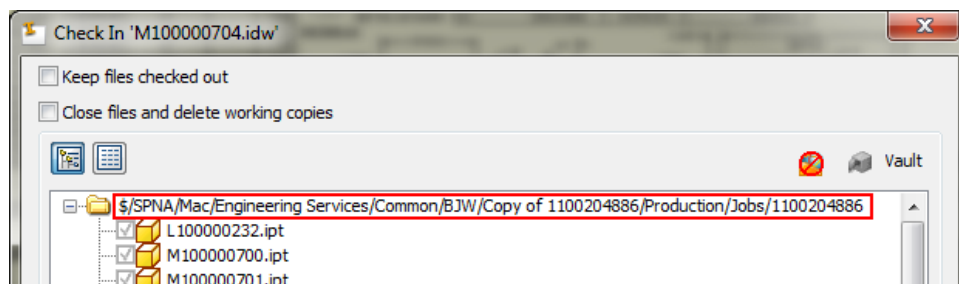
- Sometimes, during drawing or assembly verification, Inventor will display various message dialogs. It is helpful to temporarily switch off these notifications so the process can continue without intervention.



7. When file verification is complete click **Next** and the Settings dialog will open. Select the desired **Target Folder** where the copy will be placed. **NOTE:** This folder should have first been created in Vault and then populated to the Vault Local Cache.
 - It is generally not recommended to define a New File Prefix or Suffix but rather to assume that all files in the new directory will need to be renamed after they have been checked into the Vault.
 - Select **Use Source Project**.



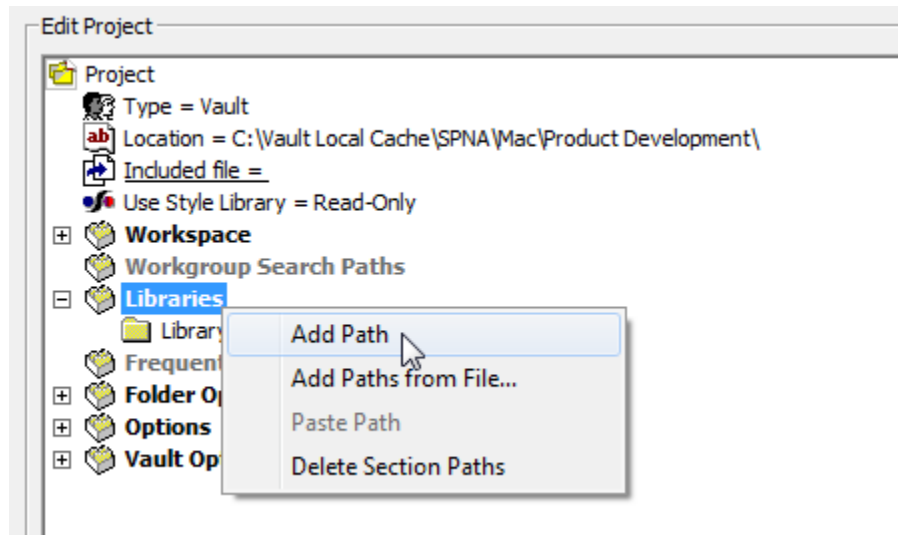
8. Click **Start** to create the new copy.
9. When the copy has completed open the new directory and open each file in Inventor and check it into the Vault via the interface on the Inventor Vault tab.
 - When opening newly copied drawings it is common for the Resolve Link dialog to open. Usually the dialog has already located the file and it is only necessary to click OK for each link.
 - After clicking the **Check In** button verify that the files are mapped to the correct location in Vault before completing the Check In dialog.



APPENDIX: Referencing a shared parts folder.

Sometimes it is desirable to reference certain shared parts and reuse them in the copied directory instead of creating new copies of them. To do this it is necessary to create a new project file for the design copy and add the shared parts location as a library to that project.

1. In the Vault Local Cache copy the applicable top level project and paste it into the directory you will be copying. **Right-click** the project, select **Properties**, and uncheck the **Read-only** box.
2. **Right-click** the project and select **Edit**.
3. **Right-click** on **Libraries** and select **Add Path** to define the location of the shared parts.
4. Set the project as the **Source Project** in the iLogic Design Copy dialog.
5. After completing the copy delete the project and continue from **Step 9** using the original Vault project.



NOTE: The new Library location must be located outside of the new temporary projects workspace directory. This directory is automatically set to whichever folder the project is placed in.