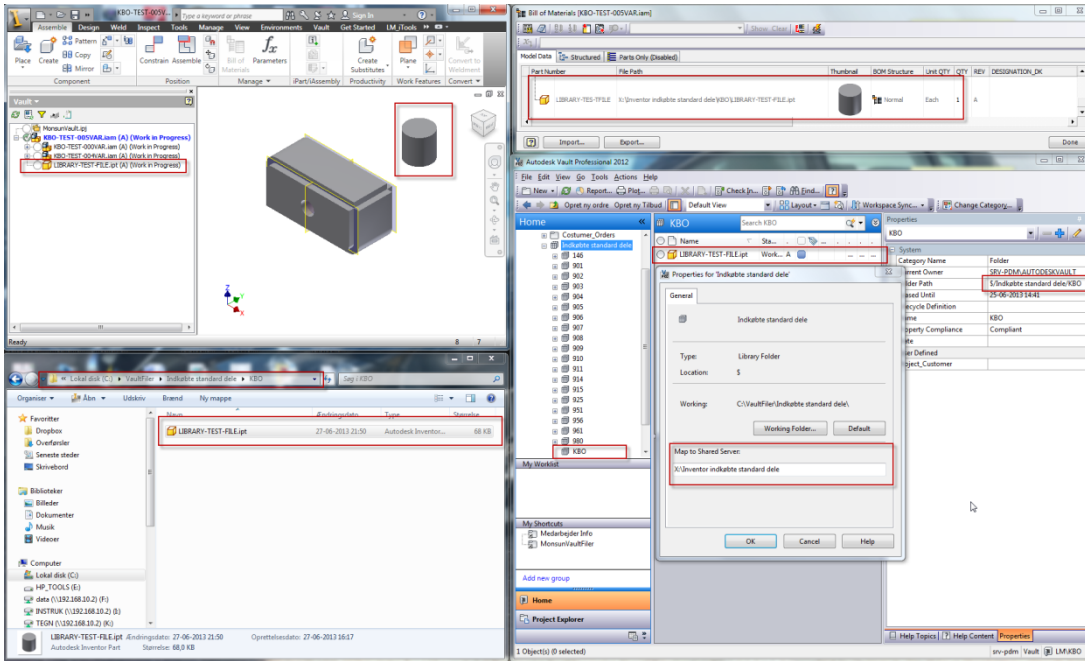
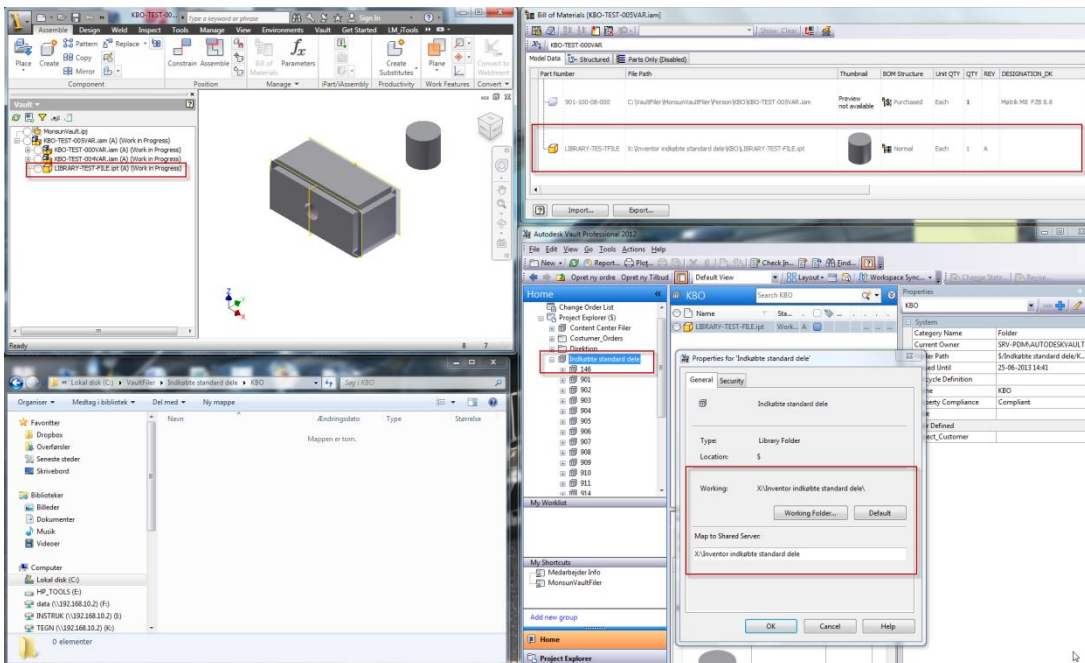


Monster Vault library bug...part1

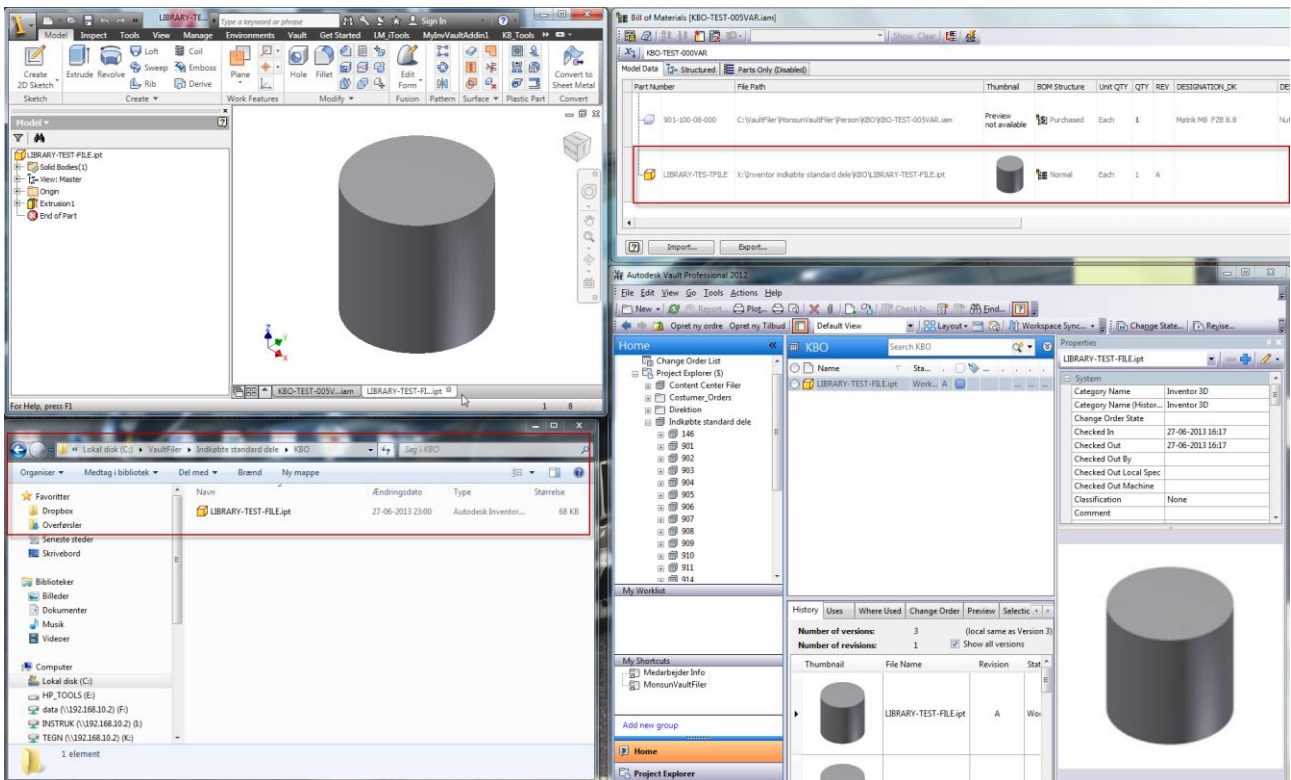
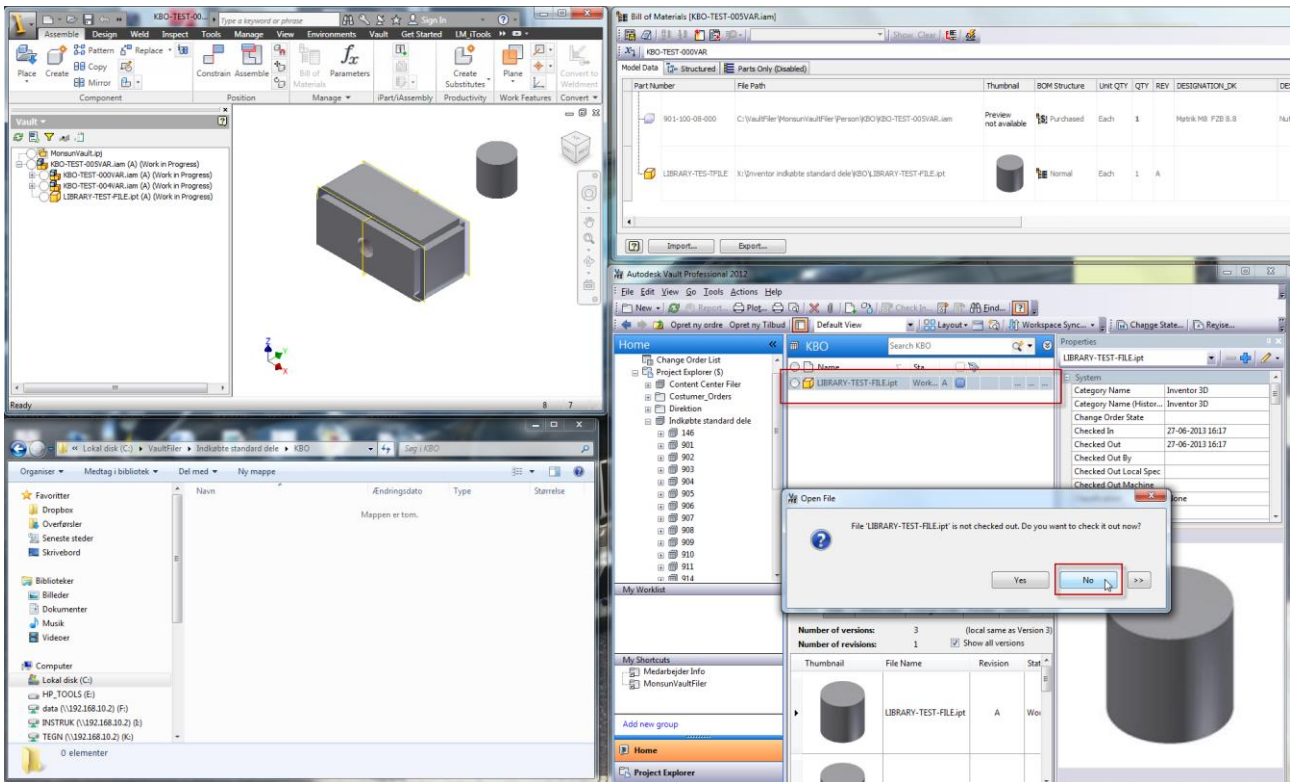
When I as administrator set vault to force working folder our library files gets downloaded to the local computer C:\ even that the library is mapped to a shared folder on X:\



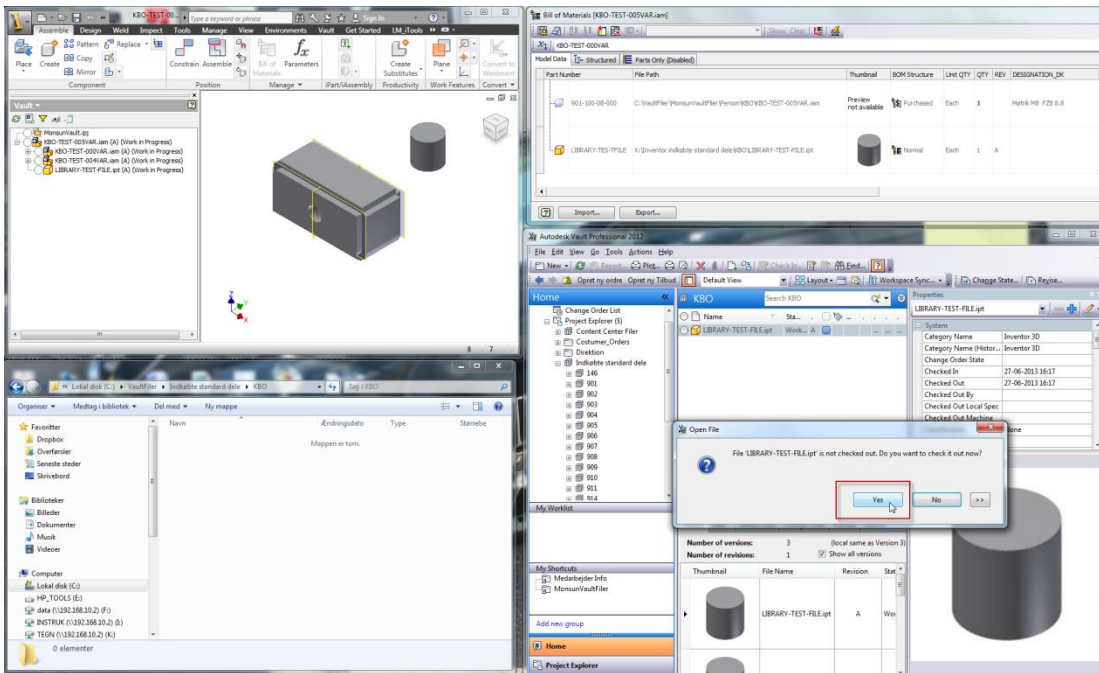
When I change vault settings to "not forcing working folder" the download of the part depends on what you select inside vault.



If I double click the part inside vault and select no to checkout the file it is still downloaded to the local drive C:\ even that it is open in an assembly where the part points to x:\.



If I double click the part and select yes to check it out. It still gets downloaded to the local drive c:\



The part opens in inventor from C:\ even that it is open in an assembly where I points to X:\

