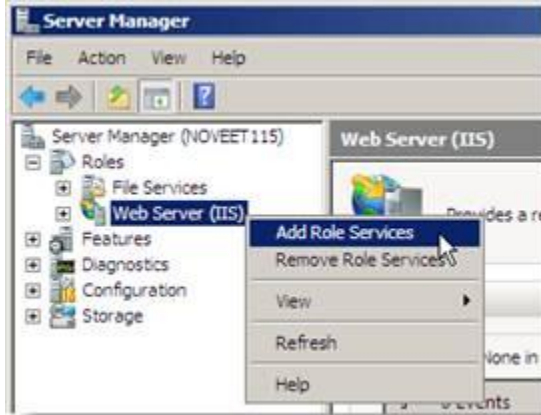


Performed on Windows 2008, **not** the R2 version.

Steps to enable Windows Authentication in Windows 2008

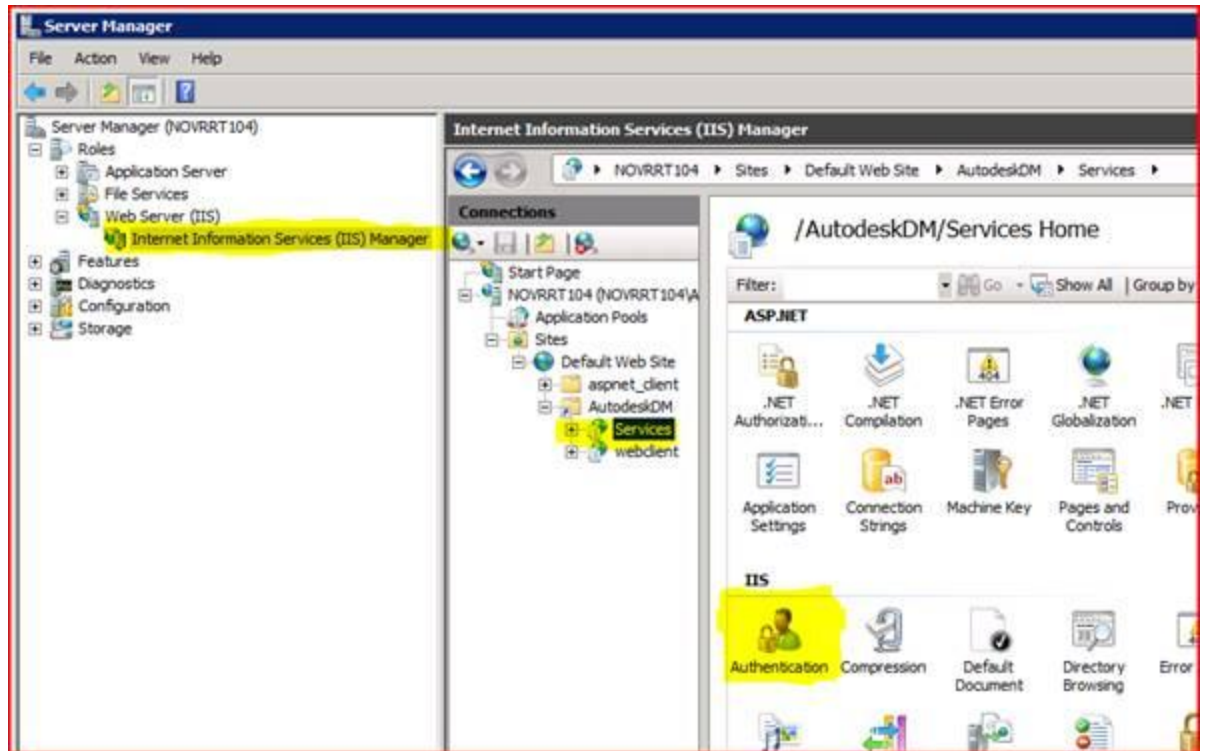
1. Open Server Manager in Windows 2008, expand Roles, right click on Web Server (IIS) and select Add Role Services. Then press install after checking Windows Authentication role.



a.



2. While still in Server Manager, expand Web Server (IIS), click on IIS Manager, and expand MachineName>Sites>Default Web Site>AutodeskDM. Select **Services** and double click on Authentication feature under the IIS section.
 - a. **NOTE:** *Services is the only tree node that would need Windows Authentication enabled. It is not necessary to enable WinAuth on Default Web Site or AutodeskDM directories.*



b.

3. Ensure Windows Authentication is Enabled; right click and select Enable if otherwise.

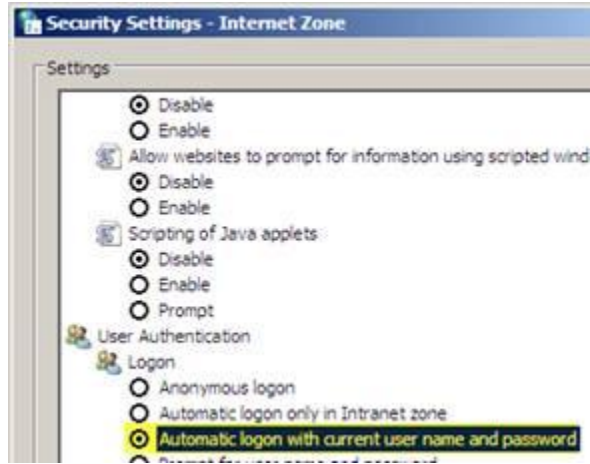


a.

4. Open a CMD prompt and execute the following commands (no quotes) **in this order**; if your website is other than the 'Default Web Site', make the replacement prior running each command:

- `"C:\Windows\System32\inetsrv\appcmd.exe set config "Default Web Site/AutodeskDM/Services" -section:system.webServer/security/authentication/windowsAuthentication /+ "providers.[value='Negotiate']" /commit:apphost"`
- `"C:\Windows\System32\inetsrv\appcmd.exe set config "Default Web Site/AutodeskDM/Services" -section:system.webServer/security/authentication/windowsAuthentication /+ "providers.[value='NTLM']" /commit:apphost"`

5. In Internet Explorer, set web browser security settings to automatic logon with current user name and password



a.