

**Autodesk®**  
Productstream®

Technical What's New



Autodesk

# Technical What's New

## Contents

Productstream Replicator.....	2
Autoloader.....	2
Improved ECO Workflows .....	3
Productstream Explorer .....	3
Inventor DWG TrueConnect Support.....	3
Automatic File Naming Tools.....	3
Batch Plot.....	4
Content Center .....	4
Inventor Integration .....	4
AutoCAD Integration.....	5
AutoCAD Mechanical Integration.....	5
AutoCAD Electrical Integration .....	5
Autodesk Data Management Server (ADMS) Console .....	5
Items.....	6
User-Interface Consistency.....	6
Backward Compatibility .....	6
64-Bit Support.....	6
Office Integration.....	6
Online Help.....	6

Autodesk® Productstream® software solves everyday problems for CAD users. It reduces the time spent organizing design files for reuse and helps users avoid costly mistakes that result in unnecessary rework. Productstream enables CAD users to efficiently release and revise designs to finish design projects faster. Productstream also manages engineering bills of materials (BOMs) and integrates with other business systems to improve information transfer and reduce errors associated with manual data entry. These integrations enable the extended team to use design information for purchasing, inventory management, and manufacturing, while allowing the engineering department to maintain control over the design data.

## Productstream Replicator

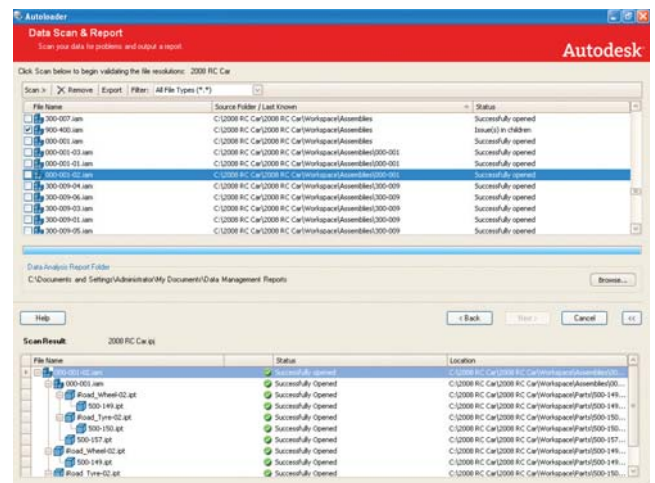
Autodesk® Productstream® Replicator is a new, additional product that works with both Autodesk® Vault 2008 and Autodesk® Productstream® 2008 databases. It enables file store replication at each site with centralized metadata to help ensure that all designers are working from the most up-to-date design and to provide the benefits of local storage and performance. It includes:

- Full per-site scheduling.
- On-demand pull of missing files.
- Client-side enhancements to notify users when local files are not up to date.
- Management of inconsistent settings across sites.
- Support for the existence of orphaned metadata by server and clients.

## Autoloader

The Autoloader has been enhanced to support the bulk loading of AutoCAD® and Autodesk® Inventor™ DWG™ drawings. It can now also be used to support other types of flat file, for example, TIF or PDF. There is no special support for AutoCAD® Electrical, AutoCAD® Mechanical, or Autodesk® Mechanical Desktop® software applications.

Autoloader can now generate DWF™ files automatically as part of the bulk-load process.

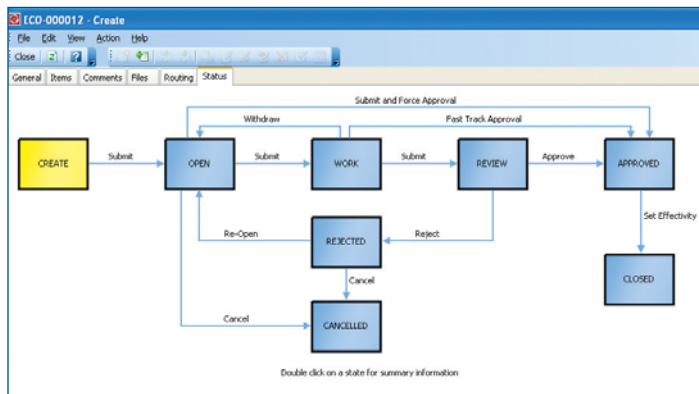


# Technical What's New

## Improved ECO Workflows

The standard ECO workflow in Productstream has been enhanced significantly to further help users track, audit, and monitor their change orders. Changes include:

- The ability to enforce that the Item lifecycle is always controlled by an ECO.
- Items must be in a specific state before specific ECO actions can be taken.
- Improved notifications.
- Control over who can receive email notifications by role and action.
- Customizable notification text.
- New actions and states.
- Optional third-level approval (Checker).
- Optional fast-track approval.
- Delete ECO.
- Better markup integration.
- Automated markup creation.
- Admin-specified markup folders.
- Delete capabilities.
- Property policies for change orders.
- Allow Create ECO without Items.



## Productstream Explorer

Autodesk® Productstream® Explorer can now be configured to view files as well as items in any lifecycle state. This helps nondesigners gain access to all kinds of managed information to help get their work done. The ability to view and search files from Productstream Explorer includes the following administrative settings:

- Whether files can be viewed.
- Whether nonreleased Items can be viewed.
- Optionally view nonreleased Items.

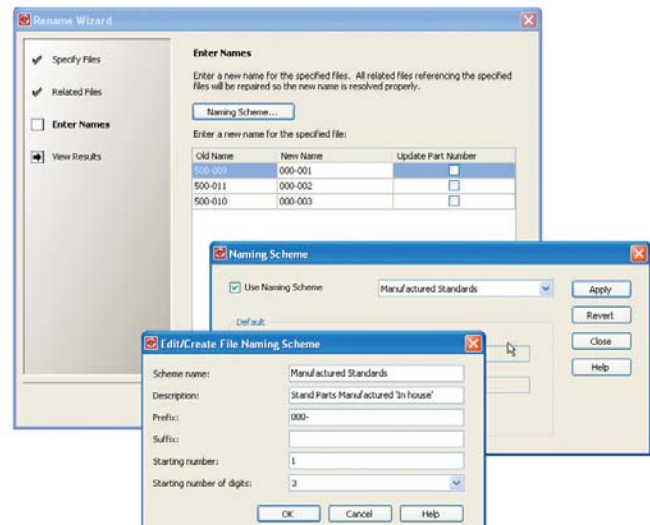
Productstream Explorer can now also be added directly to a Vault 2008 implementation for non-CAD access. Combined with the ability to now view files, this makes Productstream Explorer the perfect zero-footprint query, view, and print client for downstream users.

## Inventor DWG TrueConnect Support

Autodesk Productstream 2008 provides direct support for Inventor software's new DWG drawings. This is transparent to the end user as all normal operations remain the same, for instance, rename, copy, and property editing.

## Automatic File Naming Tools

Acknowledging users' needs to conform to naming and numbering conventions, Productstream 2008 delivers new capabilities to quickly and easily rename design files and supporting documents. Administrators can now set up and define naming schemes for files, and users can apply naming schemes to any file type using the existing Rename wizard.

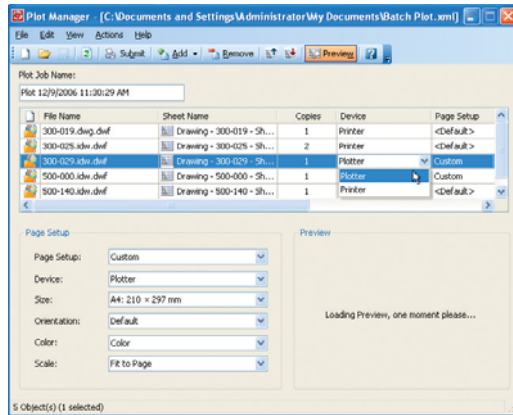


# Technical What's New

## Batch Plot

A new batch plot utility helps users reduce the time spent setting up and running plot jobs. Batch plot supports all file types and items and provides a rich client-side feature set including:

- Easy construction of plot lists.
- Add files or items to build a plot list.
- Discover related drawings by selecting item/assembly.
- Save list repeatable plot jobs.
- Provides support for CAD files and flat files (Office, TIFF, and so on).
- Management of plot queues.
- View plot progress.
- Change plot priority.
- View/print plot results.



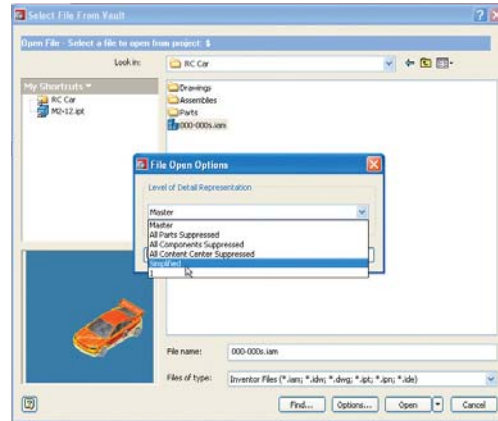
## Content Center

Management of Inventor content has been significantly improved with:

- Improved file/data transfers.
- Server-side copy of content families from library to library.
- Support for table of contents/category merging.
- Support for multiple versions of content libraries on one server.
- Updated workflow support.
- Removal of source dependencies between client and server.
- Improvements in search and installation.
- Localized display names for libraries.

## Inventor Integration

To better support everyday use models for the Inventor user, Autodesk Vault 2008 and Productstream 2008 now provide the ability to automatically retrieve files from the vault when they are missing locally.



Users can also now benefit from performance improvements when using Inventor software's level of display (LOD) for large assemblies. And, when users need to get the latest version of parts within an assembly, they can now update on a per-file basis rather than closing and opening the session again as in previous versions of Autodesk Vault and Productstream.

Common operations, including Rename, Copy Design, Move File, and Edit Properties, can now be performed without the need to migrate the Inventor files to the latest release.

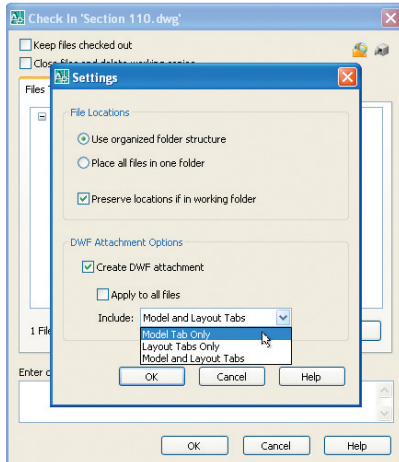


# Technical What's New

## AutoCAD Integration

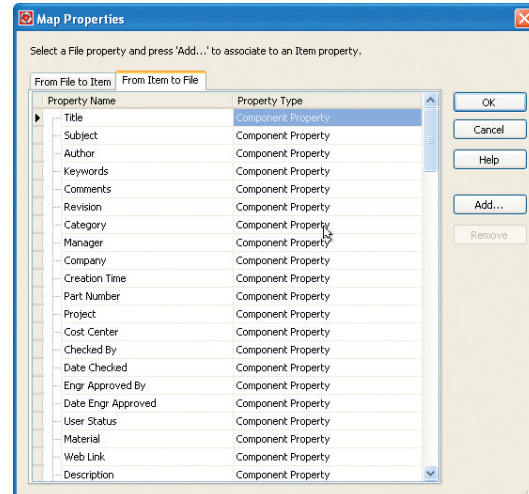
To better support everyday use models for the AutoCAD software user, Autodesk Vault 2008 and Productstream 2008 now provide the ability to check in with "Delete Local Copy" support. Users can also take advantage of the ability to manage DXF™ files with xrefs. In addition, many new ease-of-use features are available:

- Open from Autodesk Vault and Check Out All no longer attempt to download files already checked out by the user.
- Users now have the ability during check-in to deselect model or paper space from DWF publishing.
- Support is now available for MicroStation® DGN files along with the DWG file that references them. This capability also supports attaching DGN files from Vault using "Attach from Vault."
- Support is now available for multiline text attributes in AutoCAD® 2008 with Property Write Back.
- A new option is now available to ignore AutoCAD view-only changes and not trigger a check out and file save.
- The DWF Publishing Progress dialog box has been removed.
- When a user checks in a file that has unloaded or unresolved references, a new warning dialog box helps prevent partial data sets from being added to the vault.



## AutoCAD Mechanical Integration

Vault 2008 and Productstream 2008 deliver new out-of-the-box property mappings for all default AutoCAD Mechanical attributes and an improved BOM integration that includes reference component support.



## AutoCAD Electrical Integration

In the same way that AutoCAD Electrical users could benefit from the automated check-out of files when required for certain operations, Autodesk Vault 2008 and Productstream 2008 now provide them with the means to automatically check in their files after modification.

## Autodesk Data Management Server (ADMS) Console

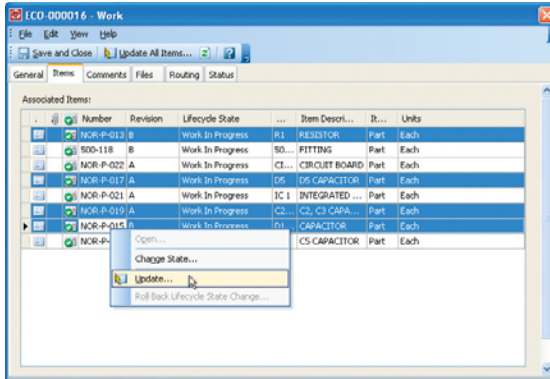
IIS Start/Stop commands have been removed from the user interface. SQL controls are now used to block users during administration of the ADMS.

# Technical What's New

## Items

The management of items has been enhanced in three key areas with the 2008 release:

- Multiple items can now be updated directly from the ECO form using the Update button on the toolbar. They can also be updated from the Item Master using standard Microsoft® Windows® multiple selection methods, for example, <Shift> or <Ctrl>.
- The creation and management of user-defined properties (UDP) for items has been made significantly easier. The UDP dialog box has been redesigned and renamed the Item Property Manager dialog box. Users can now use this single dialog box to quickly and easily create, manage, and delete UDPs for items and their policies.
- Administrators can now change the display name for Item Lifecycle States; for example, the display name of the "Work in Progress" state can display as "WIP" or the display name of the "In Review" state could be changed to "Check."



## User-Interface Consistency

Several small inconsistencies have been addressed in the various Check In and Add File dialog boxes. These changes directly benefit all the various add-ins and clients including Microsoft® Office, Inventor, AutoCAD, Productstream, and Autodesk Vault Explorer. Users can now expect the same look and feel for basic operations whenever they interact with Autodesk Vault 2008 or Productstream 2008 regardless of the application they are using.

## Backward Compatibility

Vault 2008 and Productstream 2008 continue to support the current version of the CAD application plus one version previous.

## 64-Bit Support

Vault and Productstream 2008 are 32-bit applications (server and clients) that support both 32- and 64-bit operating systems. They also provide support for 64-bit CAD applications including Inventor, AutoCAD, AutoCAD Mechanical, and AutoCAD Electrical.

## Office Integration

Overall application performance for the Microsoft Office integration has been improved significantly.

## Online Help

Additional tutorials have been added in this release to shorten learning time for all new Productstream users. New tutorials include Administration and Setup, Basic Item Workflow, Basic Change Order Release, and Batch Plot.

## Learn More or Purchase

Stay ahead of the competition with Autodesk's practical approach to data management. For more information, visit [www.autodesk.com/productstream](http://www.autodesk.com/productstream).

For more information on extending the power of your data management technology, visit [www.autodesk.com/subscription](http://www.autodesk.com/subscription).

For more information on making the most of your software investment, visit [www.autodesk.com/consulting](http://www.autodesk.com/consulting).

Purchase Autodesk Productstream through your Autodesk Authorized Reseller. To locate the reseller nearest you, visit [www.autodesk.com/reseller](http://www.autodesk.com/reseller).